


Age and growth of Brauer's lanternfish *Gymnoscopelus braueri* and rhombic lanternfish *Krefftichthys anderssoni* (Family Myctophidae) in the Scotia Sea, Southern Ocean

Ryan A. Saunders¹  | Silvia Lourenço^{2,3} | Rui P. Vieira⁴ | Martin A. Collins¹ | Carlos A. Assis^{5,6} | Jose C. Xavier^{7,1}

¹British Antarctic Survey, Natural Environment Research Council, Cambridge, UK

²MARE - Marine and Environmental Sciences Centre, Polytechnic of Leiria, Peniche, Portugal

³CIIMAR/CIMAR, Interdisciplinary Centre of Marine and Environmental Research, University of Porto, Matosinhos, Portugal

⁴Centre for Environment Fisheries and Aquaculture Sciences, Lowestoft, UK

⁵MARE-ULisboa - Marine and Environmental Sciences Centre, Faculty of Sciences, University of Lisbon, Lisbon, Portugal

⁶Department of Animal Biology, Faculty of Sciences, University of Lisbon, Lisbon, Portugal

⁷Department of Life Sciences, MARE-UC, University of Coimbra, Coimbra, Portugal

Correspondence

Ryan A. Saunders, British Antarctic Survey, Natural Environment Research Council, High Cross, Madingley Road, Cambridge, CB3 0ET, UK.
Email: ryaund@bas.ac.uk

Funding information

This work was carried out as part of the British Antarctic Survey's POETS and SCOOBIES Projects within the Ecosystems programme, funded by the Natural Environment Research Council, a part of UK Research and Innovation. R.P.V. and S.L. were supported by the Caixa Geral de Depósitos grant programme "Nova Geração de Cientistas Polares" and J.X. received financial support from Fundação para a Ciência e Tecnologia (FCT, Portugal) through the strategic project UID/MAR/04292/2019, granted to MARE, as well as SCAR-ANT-ERA and ICED programmes.

Abstract

This study examines age and growth of Brauer's lanternfish *Gymnoscopelus braueri* and rhombic lanternfish *Krefftichthys anderssoni* from the Scotia Sea in the Southern Ocean, through the analysis of annual growth increments deposited on sagittal otoliths. Otolith pairs from 177 *G. braueri* and 118 *K. anderssoni* were collected in different seasons from the region between 2004 and 2009. Otolith-edge analysis suggested a seasonal change in opaque and hyaline depositions, indicative of an annual growth pattern, although variation within the populations of both species was apparent. Age estimates varied from 1 to 6 years for *G. braueri* (40 to 139 mm standard length; L_S) and from 0 to 2 years for *K. anderssoni* (26 to 70 mm L_S). Length-at-age data were broadly consistent with population cohort parameters identified in concurrent length-frequency data from the region for both species. The estimated values of von Bertalanffy growth curves for *G. braueri* were $L_\infty = 133.22$ mm, $k = 0.29$ year⁻¹ and $t_0 = -0.21$ year and the values for *K. anderssoni* were $L_\infty = 68.60$ mm, $k = 0.71$ year⁻¹ and $t_0 = -0.49$ year. There were no significant ($P > 0.05$) differences in growth between sexes for either species, suggesting that males and females have similar growth and development trajectories in the Scotia Sea. A positive allometric relationship between L_S and wet mass was found for each species, as well as a significant ($P < 0.0001$) linear relationship between otolith size and L_S . Growth performance (Φ') was similar between the two species and congruent with other myctophid species across the Southern Ocean. This study provides important parameters for future Southern Ocean ecosystem studies in a resource management context.

KEYWORDS

body size, growth, morphology, Myctophidae, otoliths, Southern Ocean

1 | INTRODUCTION

Mesopelagic fishes represent a vast biomass in the world's oceans and are integral in the operation of oceanic ecosystems (Anderson *et al.*, 2019; Gjøsæter & Kawaguchi, 1980; Irigoien *et al.*, 2014; Pakhomov

et al., 1996). However, they remain one of the least well-studied components of marine ecosystems, both globally and regionally (St. John *et al.*, 2016). The most common mesopelagic fishes are the lanternfish (family Myctophidae), which comprise c. 245 species in 33 genera and occur throughout most of the world's oceans (Catul *et al.*, 2011;

Gjøsaeter & Kawaguchi, 1980). In the Southern Ocean, myctophids are the most abundant and speciose fish group, with 35 species and an estimated biomass of between 70 and 200 million tonnes (Duhamel *et al.*, 2014; Hulley, 1981; Lubimova *et al.*, 1987). They are an integral part of the Southern Ocean food web, being both prey for many higher predators, including seals, sea birds, squid and large predatory fish (Cherel *et al.*, 2002; Collins *et al.*, 2007; Olsson & North, 1997; Reid & Arnould, 1996; Rodhouse *et al.*, 1992) and major consumers of zooplankton, including Antarctic krill *Euphausia superba* (Pakhomov *et al.*, 1996; Pusch *et al.*, 2004; Saunders *et al.*, 2018; Shreeve *et al.*, 2009). Myctophids also play an important role in Southern Ocean bio-geochemical cycles, as they provide a pathway for the substantial export of carbon between the sea surface and the deep ocean through their extensive vertical migrations (Pakhomov *et al.*, 1996). Despite their ecological importance, there is a paucity of information on their growth and life history (Greely *et al.*, 1999; Linkowski, 1985; Rowedder, 1979; Saunders *et al.*, 2017). This, in turn, has limited the representation of myctophids in Southern Ocean ecosystem models and confounded our understanding of how ecosystem-level processes, such as food web dynamics and biogeochemical cycles, operate in the region (Hill *et al.*, 2007; Kock *et al.*, 2012; Murphy *et al.*, 2007; Smetacek *et al.*, 2004).

The lack of data on Southern Ocean myctophids exists mostly because they have seldom been fished commercially, which has negated the need for their routine stock assessment and monitoring. They are also challenging to sample with trawl nets at the appropriate spatial and temporal scales. Aging methods, such as the analysis of growth increments deposited in sagittal otoliths, are difficult and often confounded for mesopelagic fish (Campana, 2001; García-Seoane *et al.*, 2014; Greely *et al.*, 1999; Rowedder, 1979), which has further limited studies to just a few species in the region. Most age-related studies of Southern Ocean myctophids are based on ages determined from annual rhythmic depositions (so called seasonal rings) in otoliths that are considered to represent time marks. Linkowski (1985) used this approach to estimate age, growth and preliminary mortality rates of Nichol's lanternfish *Gymnoscopelus nicholsi* (Gilbert 1911) in the Scotia Sea and western South Atlantic Ocean. Similarly, age and growth were also estimated for both electron subantarctic lanternfish *Electrona carlsbergi* (Tåning 1932) and *Electrona antarctica* (Günther 1878), mostly in the south-west Atlantic Ocean, although the results remain inconclusive and debatable for the latter species (Konstantinova, 1987; Linkowski, 1987; Rowedder, 1979; Zasel'sliy *et al.*, 1985). Greely *et al.* (1999) further described age and growth in *E. antarctica* based on observations of primary growth increments that were assumed to represent daily growth depositions, albeit sample sizes were relatively small ($n = 31$) and validation was not accomplished, highlighting the need for further studies on Southern Ocean myctophids using both conventional and microstructural techniques.

Brauer's lanternfish *Gymnoscopelus braueri* (Lönnberg 1905) and rhombic lanternfish *Krefftichthys anderssoni* (Lönnberg 1905) are two of the most common myctophids in the Southern Ocean, including the Scotia Sea (Atlantic sector; Collins *et al.*, 2008, 2012; Duhamel *et al.*, 2014; Lourenço *et al.*, 2017; Saunders *et al.*, 2015), which is one of the most productive regions in the Southern Ocean (Holm-Hansen *et al.*, 2004). Recent studies in this region have cast new light on seasonal patterns of

distribution, abundance, population dynamics and feeding ecology of these two species (Saunders *et al.*, 2015; Lourenço *et al.*, 2017). Both species are broadly Antarctic types that have a circumpolar distribution pattern and principally consume copepods and small euphausiids (Hulley, 1981; Saunders *et al.*, 2018). *Gymnoscopelus braueri* is a relatively large species, attaining a maximum size of around 162 mm standard length (L_S) and has an estimated life span of at least 4 years (Saunders *et al.*, 2015).

The species occurs throughout the Scotia Sea at depths between 0 and 1000 m, with the greatest concentrations occurring predominantly in waters <400 m deep and some evidence of both seasonal and diel vertical migration (DVM) behaviour (Collins *et al.*, 2008; Saunders *et al.*, 2015). Vertical segregation in size classes and size-related sexual dimorphism are also apparent for this species in the region. In contrast, *K. anderssoni* is one of the smallest species in the Scotia Sea (c. 75 mm L_S maximum), with an estimated life span of c. 2 years (Lourenço *et al.*, 2017). The species is confined to the northern Scotia Sea (southernmost boundary at c. 56° S; Figure 1) and is predominantly deep-dwelling in waters below 400 m (Collins *et al.*, 2008; Lourenço *et al.*, 2017). However, there is evidence to suggest that it partially occupies shallower waters to feed, either through DVM behaviour or possibly foray-type vertical migrations (Saunders *et al.*, 2018; Scheffer *et al.*, 2010). Unlike *G. braueri*, *K. anderssoni* appears to recruit in the Scotia Sea, with spawning evident in the waters around the South Georgian shelf-break in the austral winter (July–August; Belchier & Lawson, 2013).

Despite these recent advances in the ecology of these two species, there remain uncertainties regarding their growth patterns and life spans due to the issues that are inherent with length-frequency based cohort analysis (Campana, 2001). In this study, we examine the age and growth of *G. braueri* and *K. anderssoni* in the Scotia Sea through the analysis of sagittal otoliths collected as part of the most comprehensive myctophid fish surveys in the region to date (Collins *et al.*, 2012). We also examine otolith and body size relationships for these two species and compare their growth performance with that of populations of other myctophid species in the Southern Ocean. Our study provides important parameters for new food web, resource management and ecosystem studies in the Southern Ocean.

2 | MATERIALS AND METHODS

As required by the Antarctic Treaty (www.ats.aq), all research was conducted after a preliminary environmental assessment and under permits issued by the UK Foreign and Commonwealth Office and the Government of South Georgia and South Sandwich Islands. Fishes were collected as part of faunal surveys and no animal experiments were conducted. Therefore, no ethical approval was required.

2.1 | Study site

Four research cruises were conducted in the Scotia Sea (south-west Atlantic Ocean, c. 57° S, 40° W; Figure 1) onboard RRS *James Clark Ross* during March–April 2004 (research cruise JR100), October–December 2006 (JR161), January–February 2008 (JR177) and March–April 2009

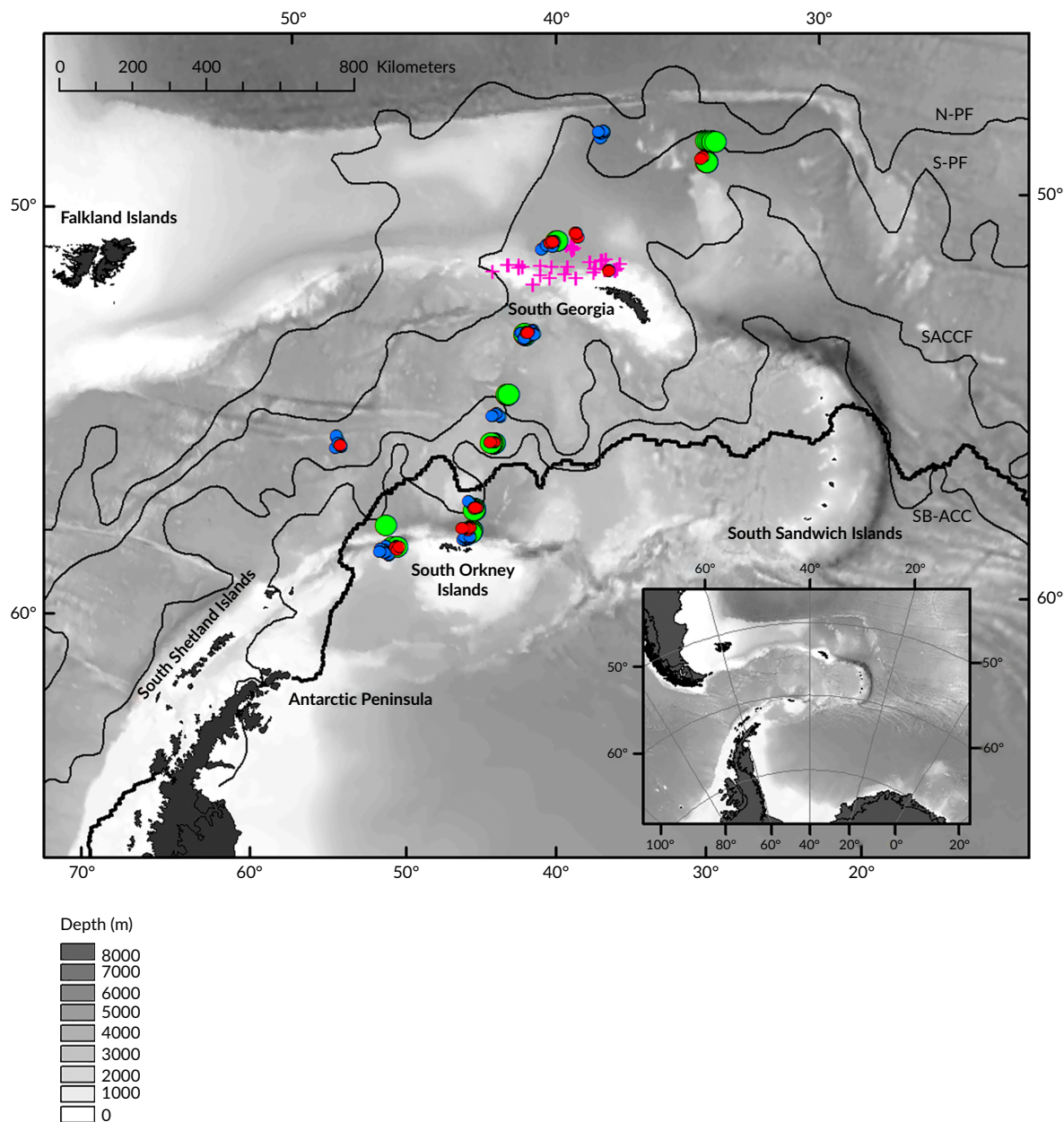


FIGURE 1 Map of the Scotia Sea showing the locations of the RMT25 net hauls for each survey: JR100, March–April 2004; JR161, October–December 2006; JR177, January–February 2008; JR200, March–April 2009. (—), the principle fronts (N-PF, northern Antarctic Polar Front; S-PF, southern Antarctic Polar Front), Southern Antarctic Circumpolar Current Front (SACC) and southern boundary of the Antarctic Circumpolar Current (SB-ACC), after Venables *et al.* (2012). (—), position of the 15% ice-edge cover at 24 October 2006. (●) JR161, (●) JR177, (●) JR200, (+) JR100

(JR200). The 2004 survey was conducted in waters to the north-west of South Georgia (Collins *et al.*, 2008), while surveys between 2006 and 2009 covered the region from the ice-edge to the Antarctic Polar Front (APF), with sampling stations spread across the predominant water masses and frontal zones in the region (Collins *et al.*, 2012).

2.2 | Sample collection and processing

Mesopelagic fish were collected using two 25 m² rectangular mid-water trawl nets (with 5 mm mesh at the cod end) that can be opened

and closed sequentially via an electronic down-wire unit (RMT25; Piatkowski *et al.*, 1994). The net was towed obliquely at c. 4.6 km h⁻¹ for 30–60 min in each depth zone and each deployment was monitored in real-time using a custom-built net monitoring system that also logged depth and temperature. At each station, depth-stratified hauls were undertaken at 0–200, 200–400, 400–700 and 700–1000 m. These zones were sampled by day and night in spring 2006 (JR161), summer 2008 (JR177) and autumn 2004 (JR100), but sampling was conducted only during hours of darkness in autumn 2009 (JR200). Additional net hauls were also undertaken opportunistically on acoustically detected mesopelagic fish aggregations during

each survey. In total, 283 hauls were conducted during the study period.

Net samples were sorted onboard to the lowest taxonomic level possible (Hulley, 1990). Total catch mass per species were recorded using a motion-compensated balance. All fish standard length (L_S , mm) were measured and frozen at -20°C for subsequent analysis. At the laboratory, otoliths were dissected from a random sub-sample of 10–25 fish per haul or from each fish where catches were small. Prior to otolith extraction, fish were re-measured and weighed to the nearest 0.01 g. Sex and maturity status was also recorded, where possible, as described in Saunders *et al.* (2017). Additional length–mass data were obtained from random sub-samples that were processed concurrently for mesopelagic fish dietary studies.

2.3 | Age and growth analyses

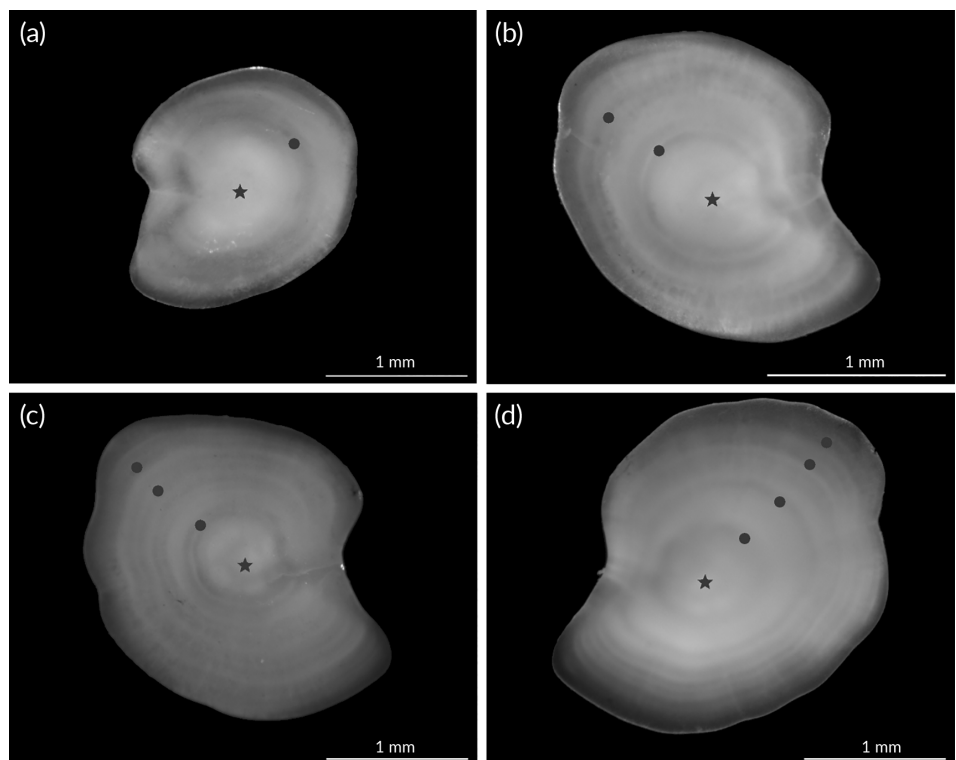
Age determination by the observation of growth increments in the otoliths was attempted for *G. braueri* and *K. anderssoni*, with 177 and 118 undamaged otolith pairs selected at random for each species, respectively. Following Panfili *et al.* (2002), otoliths were immersed in 96% ethanol and their lateral face was viewed under a microscope over a dark-background under reflected light. Growth rings were counted across the posterior dorsal radius from the nucleus to the otolith edge (Figures 2 and 3). Following previous studies of Southern Ocean and high latitude myctophids, it was assumed that one annual growth ring consisted of one opaque and one translucent band while allowing for the presence of many split increments (Gjøsaeter, 1973; Konstantinova, 1987; Linkowski, 1985, 1987; Smoker & Percy,

1970). Otoliths were examined independently by two readers. During instances when there were differences in age, otoliths were re-examined by both readers until a consensus was reached. Data were subsequently omitted where no consensus was possible (<3% of records per species). The type of otolith edge (either opaque or hyaline) was also recorded.

As well as a temporal otolith edge analysis (Campana, 2001), length-at-age data were compared with concurrent length-frequency data to partially substantiate the aging criteria. Both length-frequency and length-at-age data were selected from periods when all discernible cohorts were present and presumably recruiting in their respective populations (summer and autumn for *G. braueri* and *K. anderssoni*, respectively; Saunders *et al.*, 2015; Lourenço *et al.*, 2017). Component-fitting software (CMIX; de la Mare, 1994) was used to fit normal distributions to composite length-frequency data and identify cohort modes following the procedure detailed in Saunders *et al.* (2007). In brief, a series of runs were performed during the analysis based on the presence of one to four cohorts in the data. The best component fit to the observed data was determined using a χ^2 -test. No constraints were placed on the mean length, variance or proportions expected within each component when fitting the mixed distributions.

Growth curves were calculated by fitting the von Bertalanffy growth model (VBGM) to the observed data (Essington *et al.*, 2001): $L_t = L_\infty (1 - e^{-k(t-t_0)})$, where L_t refers to the average L_S (mm) at age t , k is the growth coefficient (year^{-1}), L_∞ is the asymptotic average L_S and t_0 is the notional average age at length zero. Initial parameters for the growth model were estimated using the Ford-Walford plot method prior to fitting the VBGM using least-squared non-linear regression (Walford, 1946). Approximate $\pm 95\%$ confidence intervals

FIGURE 2 Otoliths from *Gymnoscopelus braueri*: (a) immature specimen 1-year old, 48 mm standard length (L_S) caught in the northern Scotia Sea in spring 2006; (b) 2 year old female 80 mm L_S caught in the northern Scotia Sea in spring 2006; (c) 3 years old female 95 mm L_S caught around South Georgia in autumn 2004 and (d) 4 year old female 116 mm L_S caught in the Southern Scotia Sea in spring 2006. ★, The otolith core; ●, the opaque and translucent band-pair forming each annulus. Images show the lateral face of (a), (d) left otoliths and (b), (c) the right otoliths



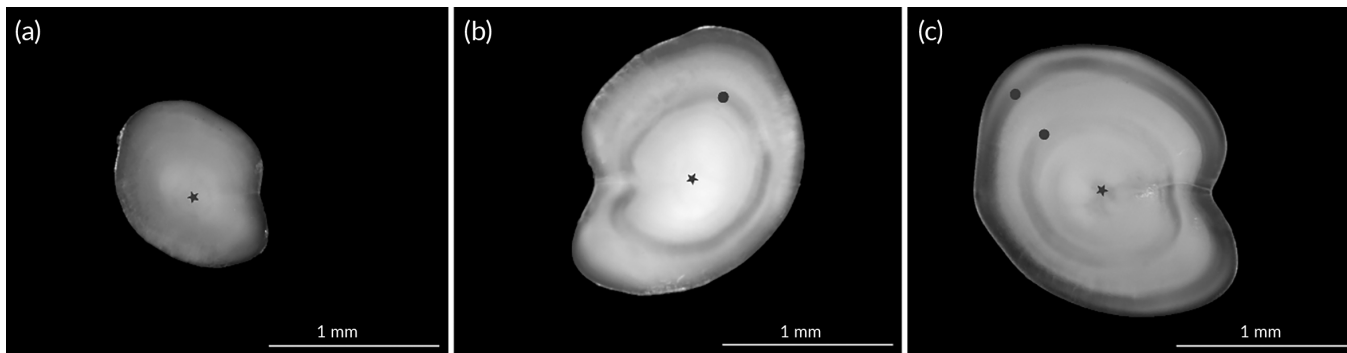


FIGURE 3 Otoliths from *Krefftichthys anderssoni*: (a) immature specimen <1 year old with no distinct annulus, 34 mm standard length (L_S) caught in the northern Scotia Sea in spring 2006; (b) 1 year old male 46 mm L_S caught in the northern Scotia Sea in spring 2006; (c) 2 year old female 71 mm L_S caught in the northern Scotia Sea in spring 2006. ★, The otolith core; ●, the opaque and translucent band-pair forming each annulus. Images show the lateral face of right otoliths (a), (c) or (b) left otoliths

for the growth models were calculated using a bootstrapping technique, whereby growth parameter residuals were re-sampled to generate multiple datasets (1000 iterations with replacement), from which multiple model fits were obtained. Percentiles of the predicted values from the many model fits were then used to represent the confidence intervals of the non-linear VBGM (Zuur *et al.*, 2007). Likelihood-ratio tests were used to compare VBGM curves between sexes (Kimura, 1980), where possible, and the growth performance index (Φ') was estimated for each species to facilitate comparisons of growth between other species in the Southern Ocean (Pauly, 1979; Pauly & Munro, 1984): $\Phi' = 2 \log L_\infty + \log k$.

2.4 | Otolith measurements

The relationships between L_S and otolith length and width were examined for *G. braueri* and *K. anderssoni* using linear-regression analysis (Zuur *et al.*, 2007). The relationship between fish age and otolith size was also examined for the two species. Measures of both otolith length (L_O) and width (W_O) were taken to the nearest 0.001 mm using a microscope and a calibrated eyepiece graticule following Williams and McEldowney (1990). L_O was defined as the greatest distance from the anterior tip to the posterior edge and W_O was defined as the greatest distance between the otolith dorsal and ventral margins. Where possible, both otoliths from each pair were measured and a Wilcoxon signed-rank test was conducted to test for differences between relationships for measurements derived from left and right otoliths. Differences between sexes were not examined here, primarily due to insufficient sex-resolved data.

2.5 | Length-mass relationships

Standard length (L_S) to total mass (M) relationships were examined through the simple non-linear regression model: $M = aL_S^b$, where a and b are constants of the regression. Differences between length-mass relationships for males and females were examined using an

analysis of covariance (ANCOVA). For this procedure, length and mass data were log (ln) transformed and relationships for each sex and both sexes combined were fitted using linear regression. This enabled an examination of ANOVA probability values from the interaction of L_S on W by sex and a comparison of the slope coefficients for each sex in the linear regressions.

3 | RESULTS

3.1 | Age and growth analysis

3.1.1 | *Gymnoscopelus braueri*

A total of 177 undamaged otolith pairs were examined from *G. braueri*, with specimens in the otolith sub-sample ranging between 40 and 139 mm L_S . Distinct hyaline and opaque zones were apparent in the otoliths of this species (Figure 2) and consensus in age readings was established for 171 otolith pairs between the two observers. Like its congener *G. nicholsi*, a faint narrow hyaline ring was present around the small opaque zone around the nucleus (Figure 2), which was regarded as an auxiliary larval ring and therefore disregarded during the counting process (Linkowski, 1985).

Determination of the nature of the otolith edge was difficult in *G. braueri*, particularly in the older age groups where the newly formed narrow opaque zones were difficult to separate from a previous hyaline zone. We found that only <16% of otoliths from specimens older than 3 years had a discernible opaque edge, regardless of season. However, newly formed opaque zones were more distinguishable in otoliths from specimens <3 years old and there was evidence of a seasonal pattern in the type of otolith edge in this group. In spring, most otoliths (80%) were characterised by a narrow hyaline edge, while most otoliths (65%) had an opaque edge during summer and autumn. However, the temporal pattern in otolith edge formation across the whole population also appears complex at the broad spatiotemporal scale of the study, as a relatively high proportion of otoliths had hyaline edges during the main productive season. Based on the

assumption that the observed sets of alternating hyaline and opaque represented annual growth marks, *G. braueri* attained a maximum age of c. 6 years. Specimens <1 year old were absent in the region, which was not attributable to the net mesh size (Saunders *et al.*, 2017).

Relatively high variation in body size was apparent for age classes between 2 and 5 years, with a difference in size of up to c. 60 mm L_S between the smallest and largest specimens per age class (Figure 4a). However, comparisons of the estimated means, modes and 25–75th percentiles showed that there was consistent overlap in the overall size distributions of the identified age and length-frequency based year (and putative age) classes for specimens between 1 and 3 year (Figure 4a). The exact timing of spawning in *G. braueri* remains unknown, although there is evidence to suggest that hatching is timed to coincide with the main phytoplankton bloom in spring (September–October; Hulley, 1981; Efremenko, 1986). Following Saunders *et al.* (2015), we assumed that hatching and recruitment occurs in October, such that age 1+ year specimens sampled in spring, summer and autumn would be around 13, 15 and 18 months old, respectively. Similarly, 2+ year specimens would be 25, 27 and 30 months old in these respective seasons, while 3+ year specimens would be 37, 39 and 42 months and so on for the subsequent year classes. In this way, an approximation of seasonally resolved age-at-length data was derived and the estimated VBGM parameters for the sample population were $L_\infty = 133.22$ mm (95% CI = 113.76–231.67, $t = 7.63$, $P < 0.001$) $k = 0.29$ (95% CI = 0.09–0.50, $t = 2.55$, $P < 0.01$) and $t_0 = -0.21$ (95% CI = -1.96 to 0.50, $t = -0.49$, $P > 0.05$; Figure 5a). Growth curves were not significantly different between males and

females from the available data ($P > 0.05$). The growth performance index for *G. braueri* was 3.71.

3.1.2 | *Kreftichthys anderssoni*

A total of 118 undamaged otolith pairs were examined for *K. anderssoni* ranging between 26 and 70 mm L_S , but only 15 specimens were <35 mm L_S . Otoliths of this species were characterised by narrow opaque bands followed by broad hyaline bands, presumable reflecting seasonal differences in growth (Figure 3). The nature of the otolith edge was most clear in specimens <2 years old, with some evidence of seasonal changes in the sequence of hyaline and opaque edges. We found that 56% of otoliths were characterised by a hyaline edge in spring and 69% had an opaque edge in summer and autumn. However, the temporal pattern in otolith edge formation across the population appears complex in this species at a broad spatiotemporal scale. Assuming the deposition patterns to be annual growth increments, *K. anderssoni* attained a maximum age of c. 2 years, with consensus in age readings established for all samples between the two observers.

There was relatively high variation in the size range of specimens for each age class, particularly in the 1+ year class (37–67 mm L_S), but there was broadly consistent overlap in the overall size distributions of 1 and 2 year old age classes identified from both otolith and length-frequency based cohort analyses (Figure 4b). Robust size comparisons between the length-at-age and length-frequency data were

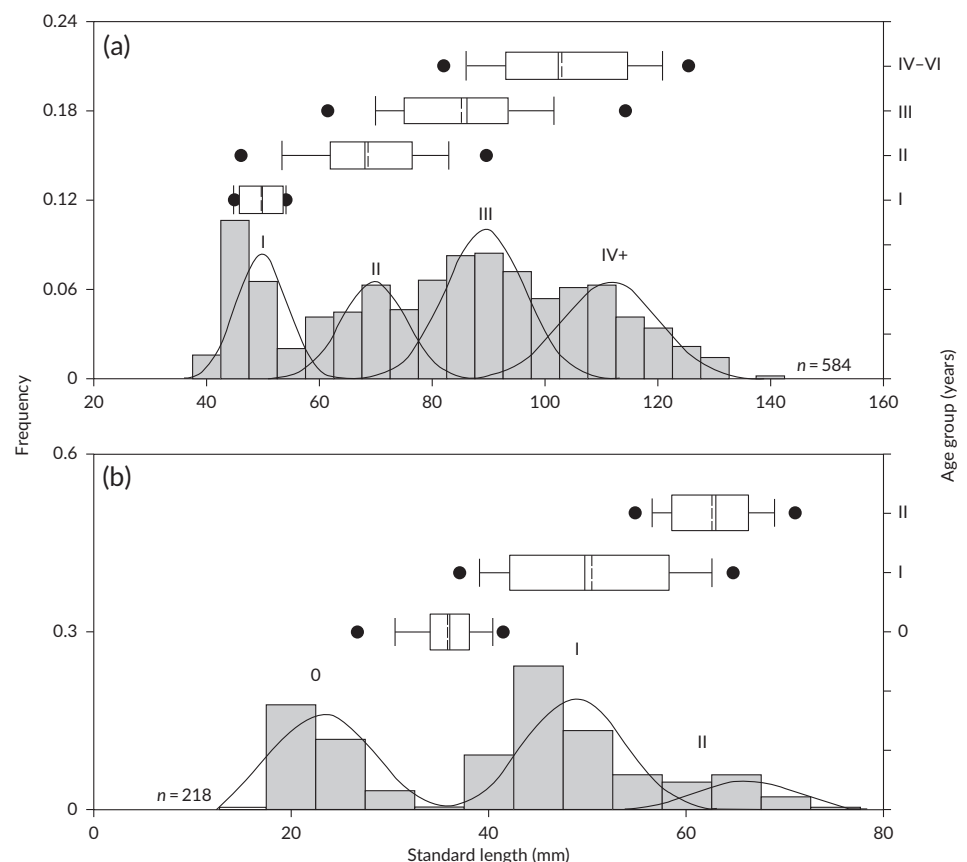


FIGURE 4 Box plots of the age-at-length data (□, median; □, interquartile range; —, 95% range; ●, outliers; ▮, mean) in relation to population cohorts identified in concurrent length-frequency data for (a) *Gymnoscopelus braueri* and (b) *Kreftichthys anderssoni* in the Scotia Sea. Year classes are: 0, 0 group; I, I group; II, II group; III, III group; IV+, IV+ group

not possible for the 0 year group, as there were too few otoliths taken from specimens <35 mm L_S and the data were therefore not fully representative of the size range of this cohort. However, the available data support the assumption that the defined annuli criteria for *K. anderssoni* otoliths represented annual growth, since the majority of 0 year class individuals fell below the 25th percentile of the size distribution for the subsequent 1 year age group–1 year class (Figure 4b).

Based on published data, we assumed that hatching and recruitment in *K. anderssoni* commences from late autumn (April–May), such that 0 year specimens sampled in autumn, spring and summer would be around 0, 6 and 8 months old, respectively (Belchier & Lawson, 2013; Lourenço *et al.*, 2017). Similarly, 1 year specimens collected in autumn, spring and summer would be c. 12, 18 and 20 months old, respectively, while 2 year specimens would be c. 24, 30 and 32 months old in these respective seasons. VBGM parameters for *K. anderssoni* were $L_\infty = 68.60$ mm (95% CI = 61.53–105.41, $t = 11.26$, $P < 0.001$), $k = 0.71$ (95% CI = 0.23–1.18, $t = 2.85$, $P < 0.01$) and $t_0 = -0.49$ (95% CI = -1.48 to -0.12, $t = -1.76$, $P > 0.05$) based on this approximation model (Figure 5b). Likelihood ratio tests revealed no significant differences in growth between sexes based on the available data ($P > 0.05$). The growth performance index for *K. anderssoni* was 3.52.

3.2 | Length-mass relationships

3.2.1 | *Gymnoscopelus braueri*

The relationship between L_S and wet mass (M) was examined for a total of 888 *G. braueri* specimens collected across the Scotia Sea between 2006 and 2009. Of the *G. braueri* specimens analysed, 33% were female, 23% were male and 44% were immature–juvenile. The size of *G. braueri* females ranged from 59 to 140 mm L_S and their mass

from 1.26 to 19.49 g. Male *G. braueri* were smaller in size, ranging from 41 to 128 mm L_S and 1.05 to 19.52 g. Immature–juvenile specimens ranged from 34 to 95 mm L_S and 0.25 to 6.55 g. The length–mass relationship showed positive allometric growth, regardless of sex (Figure 6a). Linear regression of the log transformed data was used to compare the relationship between sexes and there was no significant difference ($F_{1, 494} = 0.2482$, $P > 0.05$) in the relationships of L_S to M between males (slope $b = 2.84$) and females (slope $b = 2.90$).

3.2.2 | *Kreftichthys anderssoni*

A total of 671 *K. anderssoni* specimens were collected in the northern Scotia Sea between 2006 and 2009 for the length–mass relationship analysis. The sample set comprised 39% females, 24% males and 37% immature–juvenile specimens. Both *K. anderssoni* males and females ranged from 31 to 74 mm L_S , with females having slightly greater mean size than males (mean \pm SD female = 56.31 ± 11.13 mm compared with male = 51.67 ± 11.43 mm). The mass of females ranged from 0.21 to 4.16 g and from 0.28 to 3.94 g for males. Immature–juvenile specimens were between 27 and 67 mm L_S and between 0.14 and 3.30 g M . The length–mass relationship showed positive allometric growth for the species (Figure 6b). Linear regression analysis of log transformed data showed that there was no significant difference ($F_{1, 422} = 1.5301$, $P > 0.05$) in the relationship of L_S to M for males (slope $b = 2.86$), or females (slope $b = 2.93$).

3.3 | Otolith morphometrics

Analyses showed no significant differences in size between left and right otoliths for either species examined ($W = 14,126$, $P > 0.05$ for

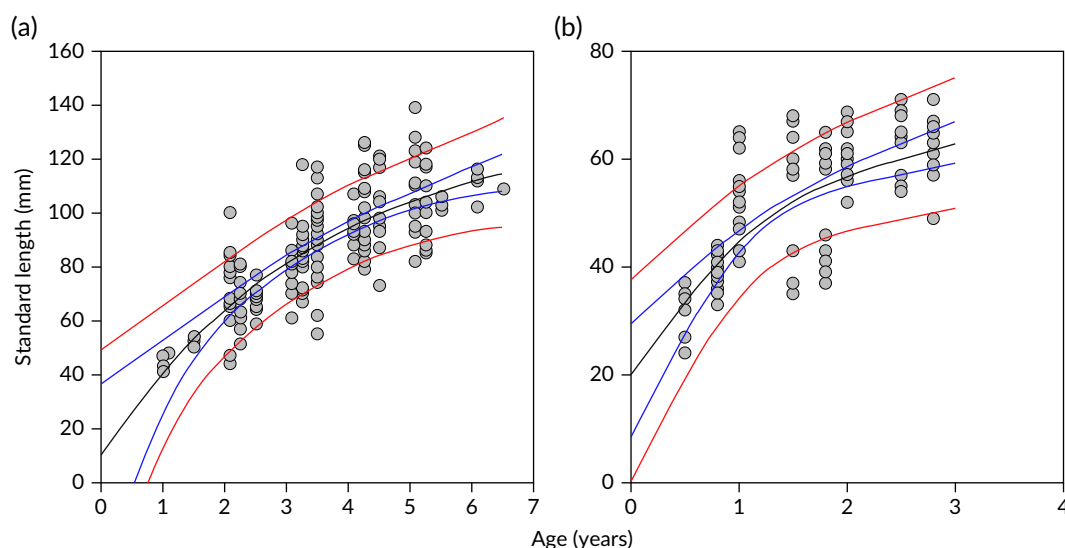


FIGURE 5 Von Bertalanffy growth curves for (a) *Gymnoscopelus braueri* collected in the Scotia Sea between the Antarctic Polar Front and the sea ice zone and (b) *Kreftichthys anderssoni* collected in the northern Scotia Sea during March–April 2004, October–December 2006, January–February 2008 and March–April 2009. —, Model fit; —, bootstrapped 95% CI; —, 95% prediction intervals

G. braueri and $W = 13,380$, $P > 0.05$ for *K. anderssoni*), so mean values for each otolith pair were calculated for examining the relationship between L_S and otolith size. Significant linear relationships between L_S and L_O ($F_{1, 490} = 2875.04$, $P < 0.001$) and W_O ($F_{1, 490} = 3742.25$, $P < 0.001$) were observed for *G. braueri* (Figure 7a). Otolith width was the best predictor of body size based on the R^2 values of the regression fits. Significant linear relationships between L_S and L_O (L_O ; $F_{1, 229} = 975.06$, $P < 0.001$) and otolith width W_O ($F_{1, 229} = 1397.17$, $P < 0.001$) were also observed for *K. anderssoni*, with the latter being the best predictor of body size based on the R^2 values of the regression fits (Figure 7b).

4 | DISCUSSION

4.1 | Sampling considerations

This study provides estimates of age and growth of *G. braueri* and *K. anderssoni* in the Southern Ocean using otolith-based aging methods. Sampling mesopelagic fish in the remote Southern Ocean at a comprehensive temporal and spatial resolution is challenging and, consequently, there are several caveats that need to be considered with the data. For instance, our growth analyses were based on sample sizes of <180 otoliths per species, with a relatively low number of replicate observations per individual length class across the size ranges of each species. Our data were also pooled across samples collected over a large spatial scale in both different seasons and years, so possible spatial and temporal effects cannot be accounted for. These factors are likely to have contributed substantially to the relatively high level of variation

observed in the length-at-age data and our otolith edge analysis, as there is relatively high spatial heterogeneity in mesopelagic fish distribution patterns, population dynamics and behaviour associated with the dynamic oceanographic processes in the region. Our study therefore highlights the complexity in determining age and growth of myctophid fish in the region. However, our results are broadly consistent with studies of other Southern Ocean myctophids (Linkowski, 1983; 1987) and with mesopelagic fish in other temperate and high latitude regions (Gjøsaeter, 1973; Smoker & Percy, 1970). Despite all of these issues, we believe that our data are the best that is available to date and our parameters provide a step forward for future food web, ecosystem management and biogeochemical modelling studies in the Southern Ocean.

4.2 | Methodological and validation issues

Interpretation of the deposition patterns in the otolith structures of Southern Ocean myctophids is complex (Greely *et al.*, 1999). Conventional age determination in teleosts is usually implemented by counting the sequence of opaque and translucent zones on sagittal otoliths that are presumed to be deposited annually. In temperate waters, the formation of translucent zones is considered to occur during winter, whereas opaque zones are formed during more rapid periods of growth in summer (Campana, 2001). These differences in fish otolith bio-mineralisation are linked to temporal fluctuations in metabolism, food intake and ambient temperature (Høie *et al.*, 2008; Neat *et al.*, 2008). However, it has been suggested that interpretation of these seasonal patterns is confounded in fish species that reside at

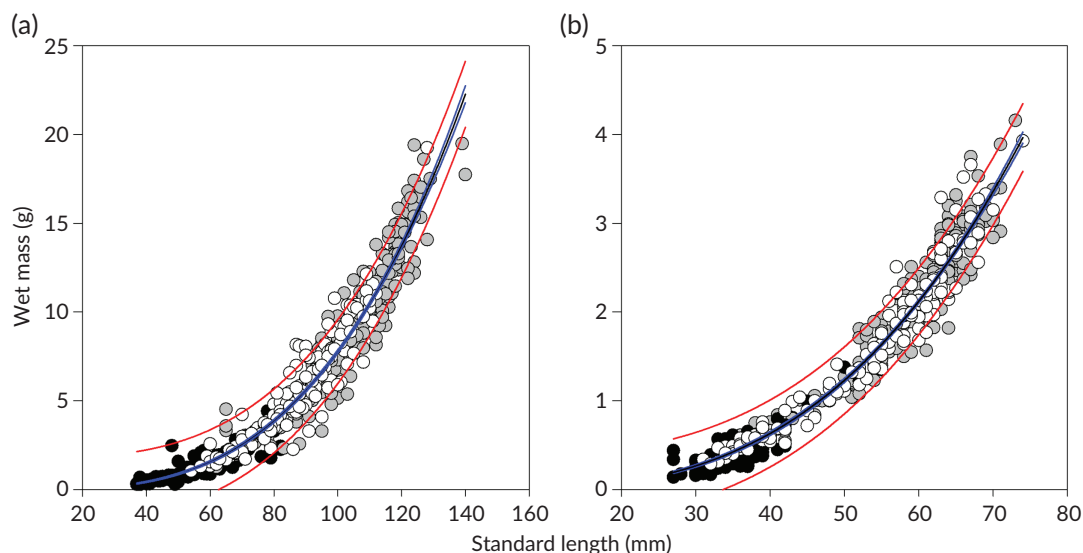


FIGURE 6 Relationship between standard length and wet mass for (a) *Gymnoscopelus braueri* ($y = 4.3272E^6 x^{3.123}$, $R^2 = 0.9517$, $P < 0.001$) and (b) *Kreftlichthys anderssoni* ($y = 1.0472E^5 x^{2.9843}$, $R^2 = 0.9643$, $P < 0.001$) in the Scotia Sea: ●, juveniles; ○, females; ○, males; —, the regression fit; —, 95% confidence intervals of the regression; —, 95% confidence intervals of the population

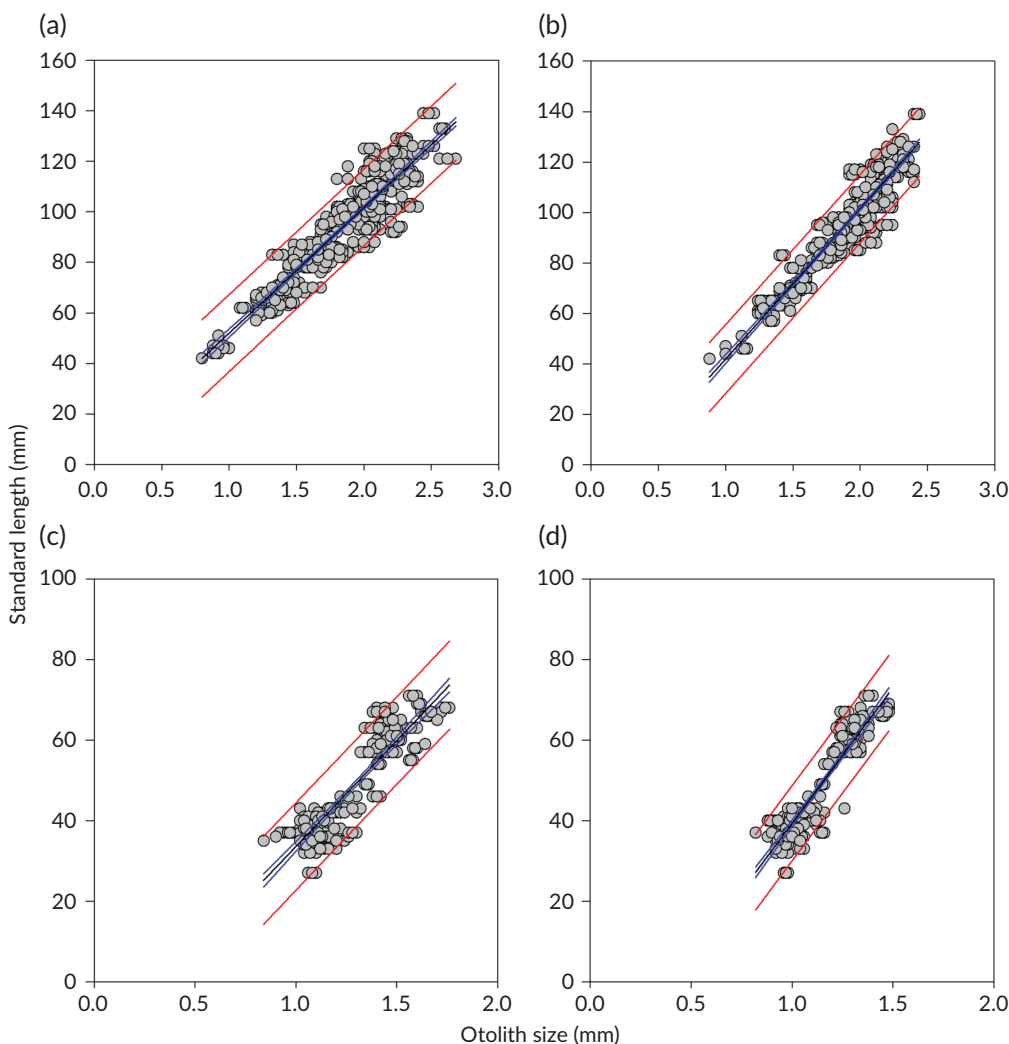


FIGURE 7 Relationship between *Gymnoscopelus braueri* standard length (L_S) and (a) otolith length (L_O ; $y = 2.2476 + 49.7598x$, $R^2 = 0.8544$, $P < 0.001$) and (b) otolith width (W_O ; $y = -17.6812 + 59.6263x$, $R^2 = 0.8840$, $P < 0.001$). (c) Relationship between *Krefftichthys anderssoni braueri* L_S and L_O ($y = -19.0045 + 52.62928x$, $R^2 = 0.8098$, $P < 0.001$) and (d) L_S v. W_O (W_O , $y = -28.0017 + 67.3415x$, $R^2 = 0.8592$, $P < 0.001$) in the Scotia Sea

high latitudes where annual periodicity in hydrographic conditions, particularly temperature, are less pronounced (Greely *et al.*, 1999; Radtke, 1987; Radtke *et al.*, 1989). Nevertheless, seasonality in the composition, abundance and behaviour of the zooplankton prey is apparent across the mesopelagic zone at high latitudes, which is also likely to have a large influence on metabolism and growth and hence biomineralisation patterns in otoliths (Mackas *et al.*, 2012; Ward *et al.*, 2012). Our study further demonstrates the complexity in interpreting myctophid otolith deposition patterns, as we found that, although most *G. braueri* and *K. anderssoni* otoliths were characterised by opaque edges in summer and hyaline edges in spring, this seasonal pattern was not uniform across all individuals within the respective populations at the resolution of our data. Definitive validation of annual growth depositions in otoliths therefore remains a major challenge for myctophids in this remote oceanic region, where it is difficult to sample congruent populations appropriately at the temporal resolution (e.g., monthly) required for the application of the most feasible validation methods, such as marginal increment analysis (MIA). Furthermore, the technical and methodological difficulties that have further hindered the application of robust MIA in any Southern Ocean myctophid study to date are detailed in Campana (2001).

Microstructural analysis methods using scanning electron microscopy (SEM) are being increasingly applied to mesopelagic fish species around the globe, particularly larval stages and are considered to represent an improvement over conventional aging methods (Bystydzińska *et al.*, 2010; Campana *et al.*, 2016; Gartner, 1991; Gjøsæter, 1987; Linkowski, 1996; Linkowski *et al.*, 1993; Moku *et al.*, 2005). The SEM approach determines growth from presumed daily (as well as other periods, such as lunar episodes) increments in otoliths, which, in some instances, have been validated for some species, through MIA (Campana *et al.*, 2016; Dwyer *et al.*, 2003; Moku *et al.*, 2005; Morales-Nin *et al.*, 2000). However, these methods are complex, time consuming and costly, which has limited their use for routine stock assessments of many commercial target species and restricted their utility for mesopelagic species that are both practically and logistically challenging to sample. As with conventional methods, definitive validation also remains challenging with the SEM approach (Gjøsæter, 1981; 1987; Greely *et al.*, 1999; Linkowski *et al.*, 1993). To date, only one SEM study has focused on any Southern Ocean species quantitatively (*E. antarctica*), which highlights the need for further studies to substantiate the applicability of both SEM and conventional techniques for aging Southern Ocean myctophids (Greely *et al.*, 1999).

4.3 | *Gymnoscopelus braueri*

In this study, we found a clear and consistent contrast between translucent and opaque zones in *G. braueri* otoliths that appeared to represent an annual growth pattern, as has been observed for its congener, *G. nicholsi* (Linkowski, 1985). Although comprehensive validation was not possible in this study, there was a broad overlap in the size distributions of cohorts identified through otolith-based and length-frequency-based methods, providing a degree of confidence in our analytical criteria, at least for the early year classes in the population (1–3 year old). This partial validation is consistent with the otolith-based aging criteria devised for *G. nicholsi* by Linkowski (1985). Our results indicate that *G. braueri* attains a maximum age of around 6 years in the Scotia Sea region. Our data highlight the problems associated with length-frequency based population analyses of this species, as such methods are unable to resolve ages classes older than 4 years due to specimens between 4 and 6 years old being indiscernible in size (Saunders *et al.*, 2015). This effect has also been reported widely for many oceanic fish species, including *G. nicholsi* in the Scotia Sea (Campana, 2001; Linkowski, 1985; 1987). As a consequence, a substantial component of the population is likely to be underrepresented using length-frequency based methods, which has implications for effective representation of *G. braueri* population dynamics in Southern Ocean food web, biogeochemical and ecosystem models. The study therefore demonstrates that otolith-based aging is necessary for future *G. braueri* population studies.

Our analyses suggest that, although *G. braueri* females attain a larger size than males, they have similar growth trajectories in the Scotia Sea. This was supported by our analysis of length-mass relationships in the species, which appeared not to be sex-specific. Sex-specific growth patterns have been found in several mesopelagic fishes, including Southern Ocean *Electrona* spp., which are considered to reflect differences in growth and maturation strategies between males and females (Greely *et al.*, 1999; Linkowski, 1985; 1987). Our results suggest similar strategies in growth and development between *G. braueri* sexes in the region, which may be indicative that the females of this species experience reduced reproductive development relative to growth in the region, thus restricting their potential to attain reproductive capacity. The possibility that *G. braueri* forms non-reproducing sink populations in waters south of the Antarctic Polar Front, as shown by the consistent absence of 0 group specimens (<40 mm L_S) across seasons, was hypothesised by Saunders *et al.* (2017), who further suggested that the species may not reach full reproductive condition and spawn successfully in the region due to the cold water temperatures (Oven *et al.*, 1990). However, more sex-resolved otolith data collected across the full-size range of the species and across its full distributional range, are required to substantiate this fully.

A further consequence of the possibility that *G. braueri* is only an expatriate migrant in the Scotia Sea, is that our parameters of growth in this colder region is not fully representative of growth across its distributional range. Although Belcher *et al.* (2019) found little evidence of regional variation in the species' respiration rates across the c. –1

to +4°C temperature range of the Scotia Sea, populations of *G. braueri* appear to be centred at sub-Antarctic and temperate latitudes, where growth, recruitment and metabolic process take place in much warmer conditions (Hulley, 1981; McGinnis, 1982), raising the possibility of regional differences in life cycle characteristics. Higher rates of growth at lower latitudes, together with variations in the timing of fish migrating, or being advected, southwards into the Scotia Sea may therefore explain some of the observed variability in our length-at-age data for this species. Additionally, our growth data were only applicable to age classes >1 year old, as younger components of the population were consistently absent from populations in regions south of the APF. Our VBGM parameters are therefore potentially unrepresentative for the early life stages (< 1 year and c. 40 mm L_S) of this species and estimates of larval growth remain unknown. Sampling in regions at lower latitudes is clearly required to investigate the growth patterns across the full lifecycle of this species, as well as to substantiate possible regional differences in growth patterns as a function of differences in underlying temperature regimes.

4.4 | *Kreftichthys anderssoni*

Our study found clear translucent and opaque zones in *K. anderssoni* otoliths that appeared to represent a distinct annual growth pattern in most specimens. Congruent with length-frequency based analysis, the species had a lifespan of c. 2 years (Lourenço *et al.*, 2017). The presence and absence of apparent annual growth depositions in the otoliths of this predominantly deep-dwelling species is interesting given that the Scotia Sea population appears to reside predominantly in the thermally stable circumpolar deep water throughout the year, where seasonality effects in environmental conditions, particularly temperature, would be expected to be less pronounced. The species also appears to occupy only a narrow thermal range throughout the Scotia Sea, which is centred around c. 2°C (Saunders & Tarling, 2018). However, recent studies in the region have found relatively small proportions of *K. anderssoni* in the surface layers, both at night and during the day, suggesting foray-type vertical migration behaviour that would expose some parts of the population to distinct seasonality in temperature regimes in the upper 200 m of the water column (Collins *et al.*, 2008; Lourenço *et al.*, 2017). Trophodynamics studies of *K. anderssoni* in the Scotia Sea also show that, although the species resides predominantly at depths below 400 m across seasons, its diet is largely comprised of copepods, small euphausiids and amphipods that are found mostly in the upper 200 m of the water column, suggesting surface feeding through foray type vertical migrations. Therefore, different components of the population may be subjected differently to the effects of marked seasonal variations in temperature, productivity and prey field abundance and composition (Venables *et al.*, 2012; Ward *et al.*, 2012) throughout the lifecycle across its distributional range, which may partially explain the apparent annual nature of the growth depositions in some otoliths, but not others.

Growth in *K. anderssoni* was previously examined by Belchier and Lawson (2013) and Lourenço *et al.* (2017) in the coastal waters around

South Georgia. These studies reported growth rates of the early life stages (<16 mm L_S) of the species that were slower than would be expected from our growth model. However, comparisons of the results from these studies are confounded, since the ichthyoplankton surveys conducted in the South Georgian coastal waters only sampled to a maximum depth of 25 m, which may have missed the larger sized larval specimens residing deeper in the water column. Distinct vertical separation in size-classes in fish larvae are commonly observed, whereby depth distribution increases progressively with increasing size and ontogeny (Sassa & Kawaguchi, 2005). Also, our growth model was largely confined to post-larval stages >35 mm L_S , as *K. anderssoni* appear to be absent in the oceanic waters of the Scotia Sea, which further biases comparisons with previous growth studies in the region. As with *G. braueri*, further data collected at a finer temporal resolution across the entire distributional range of *K. anderssoni* are required to substantiate the growth patterns of this predominantly sub-Antarctic species and investigate possible regional variations in growth and life cycle processes under different environmental regimes (Hulley, 1981).

4.5 | Comparisons of Southern Ocean myctophid growth

Comparisons of the available growth curves for Southern Ocean myctophids indicate that there is considerable inter-specific variation in growth and hence life cycle characteristics (Figure 8a). For example, *G. braueri* attains a much greater size and longevity than *K. anderssoni* and appears to have a greater rate of growth over comparable age

classes. Linkowski (1987) compared growth curves for Southern Ocean *Electrona* spp. and hypothesised that differences in growth parameters for Antarctic and sub-Antarctic-temperate species were consistent with their broad-scale distribution patterns, as species solely occupying waters south of the APF (*E. antarctica*) through the life cycle had slower growth rates than their more northern counterparts, *E. carlsbergi* and flaccid lanternfish *Metelectrona ventralis* (Becker 1963). This notion was supported by Greely *et al.* (1999), although rates of growth and longevity of *E. antarctica* were considered to be lower than previously observed. However, Pauly (1979) highlighted the difficulties inherent with comparing the growth curves of different organisms and taxa and hypotheses regarding inter-specific variations in Southern Ocean myctophid growth, therefore, remain unsubstantiated. To address this, we compiled VBGM parameters from the available studies on Southern Ocean myctophid growth in the published scientific literature and, following Pauly (1979), used the index of growth performance to examine differences in growth between myctophid species in the region (Figure 8b). Our analysis showed that, although there is some variation in growth performance between species, Southern Ocean myctophids generally have Φ' values clustered between c. 3.5 and 4.0, suggesting relatively similar patterns in growth performance. A Kruskal-Wallis test further showed that there were no significant differences in growth performance between populations of species residing in Southern Ocean ($H_{(6)} = 7.67$, $P > 0.05$). This suggests that, although populations of Southern Ocean myctophids occupy different thermal environments and have different life cycle characteristics, they are broadly adapted to optimise their growth and physiology in relation to the underlying

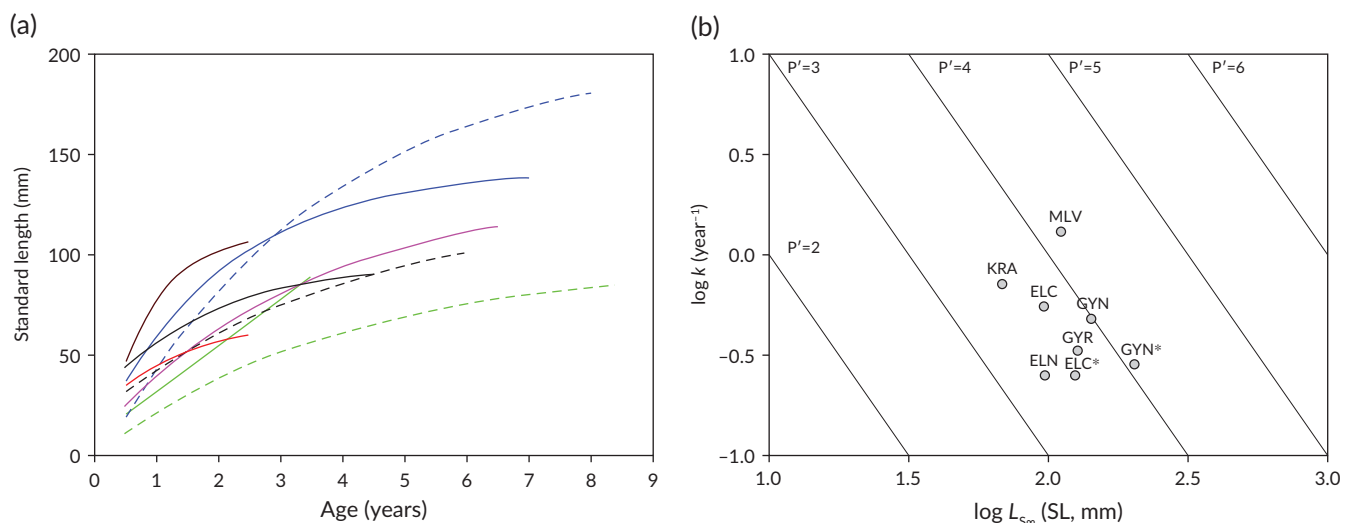


FIGURE 8 (a) Comparison of the estimated standard length (L_S) growth curves of Southern Ocean myctophids and (b) the growth performance of their populations, as summarised in the auximetric grid (Pauly, 1979): ELC, *Electrona carlsbergi*; ELN, *Electrona antarctica*, conventional aging methods; MLV, *Metelectrona ventralis* (Linkowski, 1987); ELA, *Electrona antarctica*, microstructural aging methods (Greely *et al.*, 1999); GYN, *Gymnoscopelus nicholsi* (Linkowski, 1985); ELC*, *Electrona carlsbergi* and GYN*, *Gymnoscopelus nicholsi* (Konstantinova, 1987); GYR, *Gymnoscopelus braueri* and KRA, *Kreftichthys anderssoni* present study. —, Regression fits to the observations; —, 95% CI of the regression; —, 95% CI of the observations. (—) *Electrona carlsbergi*, (---) *Electrona carlsbergi**, (—) *Electrona antarctica* (microstructural), (---) *Electrona antarctica* (conventional), (—) *Metelectrona ventralis*, (—) *Gymnoscopelus nicholsi*, (---) *Gymnoscopelus nicholsi**, (—) *Gymnoscopelus braueri*, (—) *Kreftichthys anderssoni*

environmental conditions such that species produce similar growth performance strategies across the Southern Ocean.

In conclusion, we provide estimates of the growth patterns of two biomass-dominant species in the Scotia Sea, *G. braueri* and *K. anderssoni*. We found that growth curves did not differ between sexes for either species, suggesting that males and females have similar growth and development trajectories in the Scotia Sea. Also, growth performance (Φ') was similar between the two species and congruent with other myctophid species in the Southern Ocean. Recent studies have revealed that the Scotia Sea is undergoing broad-scale environmental change that may be affecting myctophid populations (Freer *et al.*, 2019) and may have an adverse effect on food web stability and ecosystem processes (Atkinson *et al.*, 2004, 2019; Flores *et al.*, 2012; Murphy *et al.*, 2007). Given that there are few baseline data on the ecology of Southern Ocean myctophids to ascertain how they may respond to sustained environmental change and the resulting consequences for local food web stability, our study comprises important lifecycle parameters for future ecosystem studies in the region in a climate change and resource management context.

ACKNOWLEDGEMENTS

We thank the officers, crew and scientists of the RRS *James Clark Ross* for their assistance during the research cruises. We are also grateful to Y. Cherel and A. van de Putte for helpful discussions.

CONTRIBUTIONS

R.A.S. analysed the data, with assistance from S.L., and wrote the manuscript. M.A.C. collected the samples and S.L. and R.P.V. conducted the lab work. J.C.X. and C.A. supervised the lab work and assisted with the concept design. All authors contributed to manuscript writing.

ORCID

Ryan A. Saunders  <https://orcid.org/0000-0002-1157-7222>

REFERENCES

- Anderson, T. R., Martin, A. P., Lampitt, R. S., Trueman, C. N., Henson, S. A., & Mayor, D. J. (2019). Quantifying carbon fluxes from primary production to mesopelagic fish using a simple food web model. *ICES Journal of Marine Science*, 76, 690–701.
- Atkinson, A., Hill, S. L., Pakhomov, E. A., Siegel, V., Reiss, C. S., Loeb, V. J., ... Sailley, S. F. (2019). Krill (*Euphausia superba*) distribution contracts southward during rapid regional warming. *Nature Climate Change*, 9, 142–147.
- Atkinson, A., Siegel, V., & Rothery, P. (2004). Long-term decline in krill stock and increase in salps within the Southern Ocean. *Nature*, 432, 100–103.
- Belcher, A., Saunders, R. A., & Tarling, G. A. (2019). Respiration rates and active carbon flux of mesopelagic fishes (Family Myctophidae) in the Scotia Sea, Southern Ocean. *Marine Ecology Progress Series*, 610, 149–162. <https://doi.org/10.3354/meps12861>.
- Belchier, M., & Lawson, J. (2013). Analysis of temporal variability in abundance, diversity and growth rates within the coastal ichthyoplankton assemblage of South Georgia (sub-Antarctic). *Polar Biology*, 36, 969–983.
- Bystdzińska, Z. E., Phillips, A. J., & Linkowski, T. B. (2010). Larval stage duration, age and growth of blue lanternfish *Tarletonbeania crenularis* (Jordan and Gilbert, 1880) derived from otolith microstructure. *Environmental Biology of Fishes*, 89, 493–503.
- Campana, S. E. (2001). Accuracy, precision and quality control in age determination, including a review of the use and abuse of age validation methods. *Journal of Fish Biology*, 59, 197–242.
- Campana, S. E., Valentin, A. E., MacLellan, S. E., & Groot, J. B. (2016). Image-enhanced burnt otoliths, bomb radiocarbon and the growth dynamics of redfish (*Sebastes mentella* and *S. fasciatus*) off the eastern coast of Canada. *Marine and Freshwater Research*, 67, 925–936.
- Catul, V., Gauns, M., & Karuppasamy, P. K. (2011). A review on mesopelagic fishes belonging to family Myctophidae. *Reviews in Fish Biology and Fisheries*, 21, 339–354.
- Cherel, Y., Bocher, P., Trouve, C., & Weimerskirch, H. (2002). Diet and feeding ecology of blue petrels *Halobaena caerulea* at Iles Kerguelen, Southern Indian Ocean. *Marine Ecology-Progress Series*, 228, 283–299.
- Collins, M. A., Ross, K. A., Belchier, M., & Reid, K. (2007). Distribution and diet of juvenile Patagonian toothfish on the South Georgia and Shag Rocks Shelves (Southern Ocean). *Marine Biology*, 152, 135–147.
- Collins, M. A., Stowasser, G., Fielding, S., Shreeve, R., Xavier, J. C., Venables, H. J., ... Van de Putte, A. (2012). Latitudinal and bathymetric patterns in the distribution and abundance of mesopelagic fish in the Scotia Sea. *Deep-Sea Research Part I*, 59–60, 189–198.
- Collins, M. A., Xavier, J. C., Johnston, N. M., North, A. W., Enderlein, P., Tarling, G. A., ... Cunningham, N. J. (2008). Patterns in the distribution of myctophid fish in the northern Scotia Sea ecosystem. *Polar Biology*, 31, 837–851.
- de la Mare, W. (1994). Estimating krill recruitment and its variability. *CCAMLR Science*, 1, 55–69.
- Duhamel, G., Hulley, P. A., Causse, R., Koubbi, P., Vacchi, M., Pruvost, P., ... Van de Putte, A. P. (2014). Biogeography patterns of fish. In C. De Broyer, P. Koubbi, H. Griffiths, B. Raymond, & C. D'Udekem d'Acoz (Eds.), *Biogeographic Atlas of the Southern Ocean* (pp. 328–362). Cambridge, UK: Scientific Committee on Antarctic Research.
- Dwyer, K. S., Walsh, S. J., & Campana, S. E. (2003). Age determination, validation and growth of Grand Bank yellowtail flounder (*Limanda ferruginea*). *ICES Journal of Marine Science*, 60, 1123–1138.
- Efremenko, V. N. (1986). Distribution of eggs and larvae of Myctophidae in the southern Atlantic. *Journal of Ichthyology*, 26, 141–147.
- Essington, T. E., Kitchell, J. F., & Walters, C. J. (2001). The von Bertalanffy growth function, bioenergetics and the consumption rates of fish. *Canadian Journal of Fisheries and Aquatic Sciences*, 58, 2129–2138.
- Flores, H., Atkinson, A., Kawaguchi, S., Krafft, B. A., Milinevsky, G., Nicol, S., ... Werner, T. (2012). Impact of climate change on Antarctic krill. *Marine Ecology Progress Series*, 458, 1–19.
- Freer, J. J., Tarling, G. A., Collins, M. A., Partridge, J. C., & Genner, M. J. (2019). Predicting future distributions of lanternfish, a significant ecological resource within the Southern Ocean. *Diversity and Distributions*, 25, 1259–1272.
- García-Seoane, E., Meneses, I., & Silva, A. (2014). Microstructure of the otoliths of the glacier lanternfish, *Benthosema glaciale*. *Marine and Freshwater Research*, 66, 70–77.
- Gartner, J. V. (1991). Life histories of 3 species of lanternfishes (pisces, Myctophidae) from the eastern Gulf of Mexico. 1. Morphological and microstructural analysis of sagittal otoliths. *Marine Biology*, 111, 11–20.
- Gjøsaeter, H. (1987). Primary growth increments in otoliths of six tropical myctophid species. *Biological Oceanography*, 4, 359–382.
- Gjøsaeter, J. (1973). Age, growth and mortality of the myctophid fish, *Benthosema glaciale* (Reinhardt), from western Norway. *Sarsia*, 52, 53–58.
- Gjøsaeter, J. (1981). *Life history and ecology of the myctophid fish Notoscopelus elongatus kroeyeri from the Northeast Atlantic Fiskeridirektoratets Skrifter, Serie Havundersøkelser* (Vol. 17, pp. 133–152). Bergen, Norway: Fiskeridirektoratets havforskningsinstitutt.
- Gjøsaeter, J., & Kawaguchi, K. (1980). A review of the world resources of mesopelagic fish (Fisheries Technical Paper 193, pp. 1–151). FAO (Food and Agriculture Organization of the United Nations).

- Greely, T. M., Gartner, J. V., & Torres, J. J. (1999). Age and growth of *Electrona antarctica* (Pisces: Myctophidae), the dominant mesopelagic fish of the Southern Ocean. *Marine Biology*, 133, 145–158.
- Hill, S. L., Reid, K., Thorpe, S. E., Hinke, J., & Watters, G. M. (2007). A compilation of parameters for ecosystem dynamics models of the Scotia Sea-Antarctic Peninsula region. *CCAMLR Science*, 14, 1–25.
- Høie, H., Folkvord, A., Mosegaard, H., Li, L., Clausen, L. A. W., Norberg, B., & Geffen, A. J. (2008). Restricted fish feeding reduces cod otolith opacity. *Journal of Applied Ichthyology*, 24, 138–143.
- Holm-Hansen, O., Kahru, M., Hewes, C. D., Kawaguchi, S., Kameda, T., Sushin, V. A., ... Mitchell, B. G. (2004). Temporal and spatial distribution of chlorophyll-a in surface waters of the Scotia Sea as determined by both shipboard measurements and satellite data. *Deep Sea Research Part II*, 51, 1323–1331.
- Hulley, P. A. (1981). Results of the research cruises of FRV "Walther Herwig" to South America. 58. Family Myctophidae (Osteichthyes, Myctophiformes). *Archiv für Fischereiwissenschaft*, 31, 1–300.
- Hulley, P. A. (1990). Myctophidae. In O. Gon & P. C. Heemstra (Eds.), *Fishes of the Southern Ocean* (pp. 146–178). Grahamstown, South Africa: J.L.B. Smith Institute of Ichthyology.
- Irigoien, X., Klevjer, T. A., Rostad, A., Martinez, U., Boyearea, G., Acuna, J. L., ... Kaartvedt, S. (2014). Large mesopelagic fishes biomass and trophic efficiency in the open ocean. *Nature Communications*, 5, 3271.
- Kimura, D. K. (1980). Likelihood methods for the von Bertalanffy growth curve. *Fishery Bulletin*, 77, 765–776.
- Kock, K. H., Barrera-Oro, E., Belchier, M., Collins, M. A., Duhamel, G., Hanchet, S., ... Williams, R. (2012). The role of fish as predators of krill (*Euphausia superba*) and other pelagic resources in the Southern Ocean. *CCAMLR Science*, 19, 115–169.
- Konstantinova, M. P. (1987). Growth and natural mortality rates of three species of myctophids from the Southern Atlantic. Abstract. In Resources of the Southern Ocean and Problems of their Rational Exploitation. Second All-Union Conference, 22 to 24 September 1987 (pp. 117–118), Kerch: USSR Ministry of Fisheries (In Russian).
- Linkowski, T. B. (1983). *Electrona carlsbergi* (Taning, 1932), the principle component of a deep scattering layer in the Pacific sector of the Antarctic Ocean. *Polish Polar Research*, 4, 71–78.
- Linkowski, T. B. (1985). Population biology of the myctophid fish *Gymnoscopelus nicholsi* (Gillber, 1911) from the western South Atlantic. *Journal of Fish Biology*, 27, 683–698.
- Linkowski, T. B. (1987). Age and growth of four species of *Electrona* (Teleostei, Myctophidae). In S. A. Kullander & B. Fernholm (Eds.), *Proceedings of the V Congress of the European Ichthyologists. Congressus Europaeus Ichthyologorum 1985* (pp. 435–442). Stockholm, Sweden: Swedish Museum of Natural History.
- Linkowski, T. B. (1996). Lunar rhythms of vertical migrations coded in otolith microstructure of North Atlantic lanternfishes, genus *Hygophum* (Myctophidae). *Marine Biology*, 124, 495–508.
- Linkowski, T. B., Radtke, R. L., & Lenz, P. H. (1993). Otolith microstructure, age and growth of two species of *Ceratoscopelus* (Osteichthyes: Myctophidae) from the eastern North Atlantic. *Journal of Experimental Marine Biology and Ecology*, 167, 237–260.
- Lourenço, S., Saunders, R. A., Collins, M. A., Shreeve, R. S., Assis, C. A., Belchier, M., ... Xavier, J. C. (2017). Life cycle, distribution and trophodynamics of the lanternfish *Kreftlichthys anderssoni* (Lönnerberg, 1905) in the Scotia Sea. *Polar Biology*, 40, 1229–1245.
- Lubimova, T., Shust, K., & Popkov, V. (1987). *Specific features in the ecology of Southern Ocean mesopelagic fish of the family Myctophidae*. Moscow, Russia: Nauka Press.
- Mackas, D. L., Greve, W., Edwards, M., Chiba, S., Tadokoro, K., Eloire, D., ... Peluso, T. (2012). Changing zooplankton seasonality in a changing ocean: Comparing time series of zooplankton phenology. *Progress in Oceanography*, 97–100, 31–62.
- McGinnis, R. F. (1982). *Biogeography of lanternfishes (Myctophidae) south of 30°S*. Washington, DC: American Geophysical Union.
- Moku, M., Hayashi, A., Mori, K., & Watanabe, Y. (2005). Validation of daily otolith increment formation in the larval myctophid fish *Diaphus* slender-type spp. *Journal of Fish Biology*, 67, 1481–1485.
- Morales-Nin, B., Moranta, J., & Balguerías, E. (2000). Growth and age validation in high-Antarctic fish. *Polar Biology*, 23, 626–634.
- Murphy, E. J., Trathan, P. N., Watkins, J. L., Reid, K., Meredith, M. P., Forcada, J., ... Rothery, P. (2007). Climatically driven fluctuations in Southern Ocean ecosystems. *Proceedings of the Royal Society B*, 274, 3057–3067.
- Neat, F. C., Wright, P., & Fryer, R. J. (2008). Temperature effects on otolith pattern formation in Atlantic cod *Gadus morhua*. *Journal of Fish Biology*, 73, 2527–2541.
- Olsson, O., & North, A. W. (1997). Diet of the King Penguin *Aptenodytes patagonicus* during three summers at South Georgia. *Ibis*, 139, 504–512.
- Oven, L. S., Konstantinova, M. P., & Shevchenko, N. F. (1990). Aspects of reproduction and feeding of myctophids (Myctophidae) in the southwest Atlantic. *Journal of Ichthyology*, 30, 115–127.
- Pakhomov, E. A., Perissinotto, R., & McQuaid, C. D. (1996). Prey composition and daily rations of myctophid fishes in the Southern Ocean. *Marine Ecology Progress Series*, 134, 1–14.
- Panfil, J., Pontual, H., Troadec, H., & Wright, P. J. (Eds.). (2002). *Manual of fish sclerochronology*. Brest, France: Ifremer-IRD coedition.
- Pauly, D. (1979). *Gill size and temperature as governing factors in fish growth: a generalization of von Bertalanffy's growth formula* (Vol. 63, pp. 156). Kiel, Germany: Institut für Meereskunde an der Universität Kiel.
- Pauly, D., & Munro, J. L. (1984). Once more on the comparison of growth in fish and invertebrates. *FishByte*, 2, 195–196.
- Piatkowski, U., Rodhouse, P. G., White, M. G., Bone, D. G., & Symon, C. (1994). Nekton community of the Scotia Sea as sampled by the RMT 25 during austral summer. *Marine Ecology Progress Series*, 112, 13–28.
- Pusch, C., Hulley, P. A., & Kock, K. H. (2004). Community structure and feeding ecology of mesopelagic fishes in the slope waters of King George Island (South Shetland Islands, Antarctica). *Deep-Sea Research Part I*, 51, 1685–1708.
- Radtke, R. L. (1987). Information incorporated in Antarctic fish otoliths. In S. A. Kullander & B. Fernholm (Eds.), *Proceedings of the V Congress of the European Ichthyologists. Congressus Europaeus Ichthyologorum 1985* (pp. 421–425). Stockholm, Sweden: Swedish Museum of Natural History.
- Radtke, R. L., Targett, T. E., Kellermann, A., Bell, J. L., & Hill, K. T. (1989). Antarctic fish growth: Profile of *Trematomus newnesi*. *Marine Ecology Progress Series*, 57, 103–117.
- Reid, K., & Arnould, J. P. Y. (1996). The diet of Antarctic fur seals *Arctocephalus gazella* during the breeding season at South Georgia. *Polar Biology*, 16, 105–114.
- Rodhouse, P. G., White, M. G., & Jones, M. R. R. (1992). Trophic relations of the cephalopod *Martialia hyadesi* (Teuthoidea, Ommastrephidae) at the Antarctic Polar Front, Scotia Sea. *Marine Biology*, 114, 415–421.
- Rowedder, U. (1979). Some aspects of the biology of *Electrona antarctica* (Gunther, 1878) (Family Myctophidae). *Meeresforschung*, 27, 244–251.
- Sassa, C., & Kawaguchi, K. (2005). Larval feeding habits of *Diaphus theta*, *Protomyctophum thompsoni* and *Tarletonbeania taylori* (Pisces : Myctophidae) in the transition region of the western North Pacific. *Marine Ecology Progress Series*, 298, 261–276.
- Saunders, R. A., Collins, M. A., Shreeve, R., Ward, P., Stowasser, G., Hill, S. L., & Tarling, G. A. (2018). Seasonal variation in the predatory impact of myctophids on zooplankton in the Scotia Sea (Southern Ocean). *Progress in Oceanography*, 168, 123–144.
- Saunders, R. A., Collins, M. A., Stowasser, G., & Tarling, G. A. (2017). Southern Ocean mesopelagic fish communities in the Scotia Sea are sustained by mass immigration. *Marine Ecology Progress Series*, 569, 173–185.
- Saunders, R. A., Collins, M. A., Ward, P., Stowasser, G., Shreeve, R. S., & Tarling, G. A. (2015). Distribution, population structure and trophodynamics of Southern Ocean *Gymnoscopelus* (Myctophidae) in the Scotia Sea. *Polar Biology*, 38, 287–308.

- Saunders, R. A., Ingvarsdottir, A., Rasmussen, J., Hay, S. J., & Brierley, A. S. (2007). Regional variation in distribution pattern, population structure and growth rates of *Meganyctiphanes norvegica* and *Thysanoessa longicaudata* in the Irminger Sea, North Atlantic. *Progress in Oceanography*, 72, 313–342.
- Saunders, R. A., & Tarling, G. A. (2018). Southern Ocean mesopelagic fish comply with Bergmann's rule. *The American Naturalist*, 191, 343–351.
- Scheffer, A., Trathan, P. N., & Collins, M. (2010). Foraging behaviour of King Penguins (*Aptenodytes patagonicus*) in relation to predictable mesoscale oceanographic features in the Polar Front Zone to the north of South Georgia. *Progress in Oceanography*, 86, 232–245.
- Shreeve, R. S., Collins, M. A., Tarling, G. A., Main, C. E., Ward, P., & Johnston, N. M. (2009). Feeding ecology of myctophid fishes in the northern Scotia Sea. *Marine Ecology Progress Series*, 386, 221–236.
- Smetacek, V., Assmy, P., & Henjes, J. (2004). The role of grazing in structuring Southern Ocean pelagic ecosystems and biogeochemical cycles. *Antarctic Science*, 16, 541–558.
- Smoker, W., & Percy, W. G. (1970). Growth and reproduction of the lanternfish *Stenobrachius leucopsarus*. *Journal of the Fisheries Research Board of Canada*, 27, 1265–1275.
- St. John, M. A., Borja, A., Chust, G., Heath, M., Grigorov, I., Mariani, P., ... Santos, R. S. (2016). A dark hole in our understanding of marine ecosystems and their services: Perspectives from the mesopelagic community. *Frontiers in Marine Science*, 3, 31.
- Venables, H., Meredith, M. P., Atkinson, A., & Ward, P. (2012). Fronts and habitat zones in the Scotia Sea. *Deep-Sea Research Part I*, 59–60, 14–24.
- Walford, L. A. (1946). A new graphic method of describing the growth of animals. *Biological Bulletin*, 90, 141–147.
- Ward, P., Atkinson, A., & Tarling, G. (2012). Mesozooplankton community structure and variability in the Scotia Sea: A seasonal comparison. *Deep-Sea Research Part II*, 59–60, 78–92.
- Williams, R., & McEldowney, A. (1990). *A guide to the fish otoliths from waters off the Australian Territory, Heard and Macquarie Islands ANARE Research Notes* (Vol. 75, pp. 1–173). Kingston, Tasmania: Australian National Antarctic Research Expeditions.
- Zasel'slii, V. S., Kudrin, B. D., Poletayev, V. A., & Chechenin, S. C. (1985). Some features of the biology of *Electrona carlsbergi* (Taning) (Myctophidae) in the Atlantic sector of the Antarctic. *Journal of Ichthyology*, 25, 163–166.
- Zuur, A. F., Ieno, E. N., & Smith, G. M. (2007). *Analysing ecological data*. New York, NY: Springer Science and Business Media.

How to cite this article: Saunders RA, Lourenço S, Vieira RP, Collins MA, Assis CA, Xavier JC. Age and growth of Brauer's lanternfish *Gymnoscopelus braueri* and rhombic lanternfish *Krefftichthys anderssoni* (Family Myctophidae) in the Scotia Sea, Southern Ocean. *J Fish Biol.* 2020;96:364–377. <https://doi.org/10.1111/jfb.14206>