

Important declarations

Please remove this info from manuscript text if it is also present there.

Associated Data

Data supplied by the author:

The raw measurements are available in the Supplementary table 2. The raw data shows all individuals of aquatic macroinvertebrates which were sampled, determined and processed in the laboratory for measurements of body length and mass. These individuals were used for estimating length-mass relationships, comparisons and statistical analysis.

Required Statements

Competing Interest statement:

The authors declare that they have no competing interests.

Funding statement:

This research was funded by the Foundation for Science and Technology, through a project grant (DOI: 10.54499/PTDC/BIA-BMA/1893/2020) and an individual contract (DOI: 10.54499/CEECIND/02435/2018/CP1534/CT0007). VD benefited from a scholarship awarded by the National Scholarship Programme of the Slovak Republic.

Length-mass relationships of pond macroinvertebrates do not hold between Southern and Northern Europe

Vladimíra Dekanová^{Corresp., 1}, Marek Svitok^{2, 3, 4}, Sara Bento¹, João Caramelo¹, Pedro Peixe e Sousa¹, Bruno M. Carreira¹

¹ cE3c - Centre for Ecology, Evolution and Environmental Changes & CHANGE - Global Change and Sustainability Institute, Faculty of Sciences, University of Lisbon, Lisbon, Portugal

² Department of Biology and General Ecology, Faculty of Ecology and Environmental Sciences, Technical University in Zvolen, Zvolen, Slovakia

³ Department of Forest Ecology, Faculty of Forestry and Wood Sciences, Czech University of Life Sciences Prague, Prague, Czech Republic

⁴ Institute of Botany, Plant Science and Biodiversity Centre, Slovak Academy of Sciences, Bratislava, Slovakia

Corresponding Author: Vladimíra Dekanová
Email address: dekanovav@gmail.com

The lack of reliable data on length-mass relationships, essential to obtain accurate biomass estimates, limits our ability to easily assess secondary production by aquatic invertebrates. In the absence of published equations from similar habitat conditions, authors often borrow equations developed in geographic regions with different climate conditions, which may bias biomass estimates. The literature overview of published size-mass relationships for Portugal and Sweden highlights the need for further data collected within these biogeographic regions. We increased the number of equations available to Southern and Northern Europe, developing 18 new length-mass relationships for two families and 10 genera in Portugal and Sweden, all published for the first time for these countries, except the genus *Asellus*. The comparison of the equations developed in this study showed country-specific differences for all taxa, but the genus *Caenis*, indicating a low transferability potential of the equations between Southern and Northern Europe. In contrast, the comparison of the equation obtained for *A. aquaticus* in this study with an equation published for this taxon in Sweden showed great similarities, suggesting a high transferability potential. We recommend caution in the borrowing of published length-mass equations, as they can differ drastically between different geographic and climatic regions, especially at larger sizes.

Length-mass relationships of pond macroinvertebrates do not hold between Southern and Northern Europe

Vladimíra Dekanová¹, Marek Svitok^{2,3,4}, Sara Bento¹, João Caramelo¹, Pedro Peixe e Sousa¹, Bruno M. Carreira¹

¹ cE3c - Centre for Ecology, Evolution and Environmental Changes & CHANGE – Global Change and Sustainability Institute, Faculty of Sciences, University of Lisbon, Lisbon, Portugal

² Department of Biology and General Ecology, Faculty of Ecology and Environmental Sciences, Technical University in Zvolen, Zvolen, Slovakia

³ Department of Forest Ecology, Faculty of Forestry and Wood Sciences, Czech University of Life Sciences Prague, Prague, Czech Republic

⁴ Institute of Botany, Plant Science and Biodiversity Centre, Slovak Academy of Sciences, Bratislava, Slovakia

Corresponding Author:

Vladimíra Dekanová¹

Bloco C2, Campo Grande, Faculty of Sciences of the University of Lisbon, Lisbon, 1749-016 Lisbon, Portugal

Email address: dekanovav@gmail.com

Abstract

The lack of reliable data on length-mass relationships, essential to obtain accurate biomass estimates, limits our ability to easily assess secondary production by aquatic invertebrates. In the absence of published equations from similar habitat conditions, authors often borrow equations developed in geographic regions with different climate conditions, which may bias biomass estimates. A literature overview of published size-mass relationships for Portugal and Sweden highlights the need for further data within these biogeographic regions. We increased the number of equations available to Southern and Northern Europe, developing 18 new length-mass relationships for two families and 10 genera in Portugal and Sweden. All equations were published for the first time for these countries, except the genus *Asellus*. Our length-mass relationships were obtained from specimens collected on a one-time sampling of eight ponds in Portugal and five ponds in Sweden during late spring in 2023. Dry mass (DM) was modelled as a function of body length (BL), using the natural log-linear function with a power model ($\ln DM = \ln a + b \times \ln BL$). The equations obtained were compared with linear mixed models testing the fixed effects of “body length” and “country”, as well as their interaction. A comparison of the equations developed in this study showed country-specific differences for all taxa, except the genus *Caenis*, indicating a low potential transferability of

the equations between Southern and Northern Europe. In contrast, the comparison of the equation obtained for *A. aquaticus* in this study with an equation published for this taxon in Sweden showed great similarities, suggesting a high transferability. Recommending caution in the borrowing of published length-mass equations, that can differ drastically between different geographic and climatic regions, especially at larger sizes, we provide a series of guidelines and good practices in this field.

Introduction

The ability to quantify secondary production is crucial to trace energy flow and understand the dynamics of ecosystems. The secondary production of invertebrates is critical in the characterization of energy transfer in aquatic ecosystems (Benke et al., 1999; Huryn & Wallace, 2000). Invertebrates play an important role in the functioning of aquatic ecosystems, greatly contributing to nutrient cycling, especially in ponds (Fehlinger et al., 2023), often dominating aquatic food webs (Habdija, Lajtner & Belinić, 1995; Wallace & Webster, 1996; Huryn & Wallace, 2000; Hauer & Resh, 2017). Thus, quantifying their production constitutes a powerful tool to study community structure, seasonal patterns, and resource distribution (Rigler & Downing, 1984; Benke, 1993).

The reliance on the determination of macroinvertebrate biomass for the assessment of secondary productivity in aquatic ecosystems stresses the importance of obtaining accurate estimates (Walther et al., 2006; Martins, Proulx & Magnan, 2014). Macroinvertebrate biomass is usually obtained following one of three methods: direct weighing of fresh (as wet weight) or preserved animals (as dry weight); estimation of biovolume; or size-mass conversion (Burgherr & Meyer, 1997). Because weighing aquatic macroinvertebrates in the field is often impractical, the latter method is the most commonly employed (Johnston & Cunjak, 1999; González, Basaguren & Pozo, 2002). The samples are fixed immediately after collection and biomass is estimated indirectly using length-mass relationships derived from size and weight measurements of the preserved organisms (Johnston & Cuniak, 1999; Wetzel, Leuchs & Koop, 2005; Benke & Huryn, 2007). This approach is faster, more precise and time-efficient than the other methods. Furthermore, it can be used on invertebrates of all sizes, does not destroy the specimens' bodies (Burgherr & Meyer, 1997; Johnston & Cunjak, 1999) and, due to its low effort, it allows for more comprehensive comparisons of invertebrate populations between different habitats and ecosystems (Benke, 1993).

Despite the great progress in the last fifty years (e.g., Smock, 1980; Benke et al., 1999; Johnston & Cunjak, 1999), equations describing aquatic macroinvertebrates size-mass relationships are still largely missing for many species, especially for insects of the orders Megaloptera, Hemiptera and Odonata. Moreover, environmental conditions, such as water temperature (Schröder, 1987) and chemistry (Meyer, 1989; Burgherr & Meyer, 1997), and food availability can affect size-mass relationships (Gee, 1988; Basset & Glazier, 1995), potentially leading to substantial differences among populations of the same species (Johnston & Cunjak, 1999). A consequence of this intraspecific variation, researchers often need to develop their own length-mass relationships to avoid inaccurate biomass estimations (Walther et al., 2006; Martins, Proulx & Magnan, 2014), and error propagation to ecosystem metrics (e.g., biomass, secondary production).

While developing size-mass relationships from actual samples is preferable (Smock, 1980; González, Basaguren & Pozo, 2002), borrowing equations from the literature is a rather common practice. Nevertheless, it should be done with caution. Studies comparing biomass estimates obtained for aquatic macroinvertebrates with developed and borrowed equations are still rare and the potential transferability of the size-mass relationships can be hard to predict. While some studies argue that geographic distance and climatic conditions can considerably affect length-mass relationships (Hajiesmaeili, Ayyoubzadeh & Abdoli, 2019; Dekanová, Venarsky & Bunn, 2022), other authors claim that length-mass models can be used in different ecosystems, provided that the environmental conditions are similar (Rosati, Barbone & Basset, 2012). Temperature is an environmental variable of paramount importance, as it is one of the main drivers of growth rate in aquatic invertebrate larvae (Brittain, 1983; Bonacina et al., 2023). According to the temperature-size rule (Atkinson, 1995), differences in environmental temperature should be reflected in adult size, with higher temperatures leading to smaller sizes, which may also affect the size-mass relationships of aquatic invertebrates.

The size-mass relationships of aquatic macroinvertebrates are better studied in Europe than in other parts of the world. However, the available equations are still relatively few, scattered in the literature, and do not provide equal coverage of all taxa or climatic regions across the continent. Here, we present an overview of the published length-mass relationships of aquatic macroinvertebrates from two European countries at latitudinal extremes (Portugal and Sweden) and expand the number of equations available for pond macroinvertebrates in Europe, by developing 18 new length-mass relationships for taxa from five orders (Isopoda, Ephemeroptera, Odonata, Hemiptera, and Coleoptera). Furthermore, we assessed the potential transferability of the length-mass relationships developed in the two regions, by comparing the equations obtained for the same taxa in Portugal and Sweden. We hypothesised that the geographical distance between our study areas in Southern and Northern Europe, together with the contrasting climate conditions and environmental constraints in these two regions, should affect the taxa surveyed in this study and lead to differences in the length-mass relationships of the pond macroinvertebrates. Hence, we predicted that the potential transferability of the equations obtained for the same taxa in the two study areas should be low between Portugal and Sweden. Lastly, we compared the equations developed in this study with those published in the literature for the same taxa, predicting a high potential transferability between equations obtained within the same region.

Materials & Methods

Overview of published length-mass relationships

We assessed the number of published length-mass relationships available in the literature for the freshwater communities of Portugal and Sweden, by performing a systematic search on the Google Scholar database in October 2023. For this, we used the following search terms: “length mass” OR “length weight” OR “size mass” OR “size weight” “relationship” AND “aquatic invertebrate” AND “Portugal” OR “Sweden”.

Study areas and focal taxa

We determined length-mass relationships for macroinvertebrate taxa present in ponds from Southwestern and Northern Europe. Situated in southwestern Europe, southwest Portugal is characterised by a termo-Mediterranean climate, with warm arid summers and cold windy winters; with air temperature typically ranging from 7°C to 30°C during the year. Situated in northern Europe, southern Sweden is characterised by a temperate oceanic (Baltic) climate, with partly cloudy summers and long, very cold, snowy, windy winters; with air temperature typically ranging from -2°C to 21°C during the year. The geographical separation between the study areas is large (over 3000 km and 17° of latitude), and, consequently, the pond communities surveyed experience different climate conditions and environmental constraints. In Southern Europe, the life cycle of pond macroinvertebrates is mainly constrained by desiccation and high water temperatures, while in Northern Europe it is mainly constrained by icing and long periods of low water temperatures (WeatherSpark).

We obtained 18 new length-mass relationships for two families and 7 genera of freshwater macroinvertebrates from Portugal (N = 1,020 specimens) and Sweden (N = 978 specimens) that were sufficiently abundant to develop the equations (see Table 2). While Portugal and Sweden shared most of the surveyed taxa, especially common and widespread taxa, there were a few exceptions. We developed a length-mass equation for the genus *Asellus*, a common shredder of the Isopoda order with dorsoventrally flattened body distributed throughout the temperate zone in Europe (Verovnik, Sket & Trontelj, 2005), that was only found in Sweden. We developed length-mass equations for two genera of gatherer collectors of the Ephemeroptera order, the cosmopolitan genus *Cloeon*, which is usually the most common mayfly in ponds; and the small sized genus *Caenis*, which occurs in high densities on the bottoms of shallow ponds (Bauernfeind & Soldan, 2013). Furthermore, we developed length-mass equations for predatory taxa from the orders Hemiptera (four genera), Odonata and Coleoptera. The taxa from the order Hemiptera comprised the genus *Notonecta*, with strongly dorsally convex and ventrally flattened body, which occurs in western and central Europe; the genera *Corix* and *Sigara* from the family Corixidae, which are predators or macrophyte piercers with flattened body that use the hind legs for swimming and are found in a wide range of habitats, often as the most common insect (Schuh & Slater, 1995); and the genus *Naucoris*, characteristic of well vegetated stagnant waters and mainly distributed in tropical and subtropical regions (Zettel, Nieser & Polhemus, 1999), that was only found in Portugal. The taxa from the order Odonata comprised the family Coenagrionidae, characterized by its elongated abdomen, which is the most widely distributed family of the suborder Zygoptera in Europe (De Knijf et al., 2024); two genera of the family Aeshnidae, *Aeshna* and *Anax*, which are insectivore taxa with similar morphology and occur in well vegetated still waters of southern and central Europe; and the genus *Sympetrum*, which is a small to medium-sized dragonfly commonly found across Europe amongst gravel, vegetation, detritus and mud (Dolný, Harabiš & Bárta, 2016). The overview of family, genus and species distribution of the surveyed taxa was based on the online databases Naturdata (Portugal) and Biodiversity4all (Sweden).

Macroinvertebrate collection

In southwestern Europe, macroinvertebrates were collected during spring, between the 1st and the 4th of May 2023, in the rural surroundings of Grândola (Portugal, 38° N), in 8

ponds within a 6 km radius (Fig. 1, Table 1). In northern Europe, macroinvertebrates were collected during late spring, between the 1st and the 7th of June 2022, in the rural surroundings of Trelleborg (Sweden, 55° N), in five ponds within a 2 km radius (Fig. 1, Table 1). To cover the diversity of macroinvertebrate taxa and the natural variation in their body mass and length, sampling was conducted in all the available microhabitats and at different depths within each pond. We collected individuals from the orders Isopoda (genus *Asellus*), Ephemeroptera (genera *Caenis*, *Cloeon*), Hemiptera (genera *Corixa*, *Sigara*, *Notonecta*, *Naucoris*), Odonata (genera *Sympetrum*, *Anax*, *Aeshna* and family Coenagrionidae) and Coleoptera (family Dytiscidae). Individuals were collected with a D-shaped net (200-µm mesh size) using kick sampling (Wetzel & Likens, 2000). This method was supplemented with hand-collecting and sweeping with a kitchen strainer (19 cm in diameter; 1 mm mesh). Immediately after collection in the field, the individuals were preserved in a solution of 96% ethanol and transferred to plastic bottles (500 mL) for further processing in the laboratory. In each pond, we recorded water parameters – temperature (°C), pH, conductivity (µS.cm⁻¹) and dissolved oxygen (mg.L⁻¹) – in three replicates (Table 1), using a portable YSI multimeter (model 6909 ProDSS, YSI Environmental, USA).

Sample processing

Macroinvertebrates were identified using the keys developed by Jansson (1969), Rozkošný (1980), Tachet et al. (2010), Dolný, Harabiš & Bárta (2016) and Kriska (2022). When genus-level identification was not possible, or the number of individuals of the genus was insufficient to estimate a length-mass relationship ($N < 10$, Johnston & Cunjak, 1999), individuals were grouped at the family level. The individuals of each taxon were sorted and separated into different size classes that consisted of 1mm increments from the smallest to the largest body length. Then, one to three individuals were measured per size class, i.e., per 1mm increment in body size, recording the body length of larval stages for all macroinvertebrate taxa, including full-grown larvae with black wing pads for Ephemeroptera. We also recorded the body length of adults of the order Hemiptera, as both larval stages and adults of this taxonomic group share similar morphological features and preferred habitats. We measured body length, a widely used morphometric trait in length-mass relationships in aquatic invertebrates, since its broader range provides higher determination coefficients than head width (Rosati, Barbone & Basset, 2012). The body length was defined as the distance from the frontal part of the head capsule to the posterior of the last abdominal segment, excluding the cerci and anal prolegs. Measurements were taken with a stereomicroscope (Nikon, model SMZ800, Japan) with an ocular micrometre of 0.05 mm accuracy (see Table S1). Overall, the number of individuals per size class was evenly distributed for most taxa, with two exceptions. The size distribution of the order Hemiptera was skewed towards small and medium-sized individuals, with only a small number of large adults included in the models ($n = 76$). Additionally, the size distribution of the family Dytiscidae displayed a few gaps in the size classes, that may have resulted from differences in the size ranges of the four subfamilies (five genera) composing this family.

After measuring total length, each individual was transferred into a pre-weighed aluminium cup, that was subsequently oven-dried at 60 °C for 24 hours following standard protocol (Benke & Huryn, 2007). Then, their dry mass (DM) was determined to the nearest

0.01 mg on a high precision scale (Ohaus Pioneer, model PX224M, Switzerland) (see Table S1). The number of individuals used to estimate the length-mass relationship for each taxon ranged between 33 for *Aeshna* and 300 for Coenagrionidae, both in Portugal (Table 2).

Statistical analysis

Dry mass (DM) was modelled as a function of body length (BL) using a natural log-linear function with a power model ($\ln DM = \ln a + b \times \ln BL$), where a and b represent the coefficients of the intercept and the slope of the relationship, respectively. We used this power model as it is the most commonly employed in studies developing length-mass relationships (Burgherr & Meyer, 1997; Johnston & Cunjak, 1999). We developed equations at the genus level for all surveyed taxa, except for two equations at the family level (Coenagrionidae and Dytiscidae). This approach allowed us to maximize the number of comparisons between countries, while undertaking an acceptable compromise in the accuracy of our models. Equations at the genus or family level are less accurate than equations at the species level, but it is common to find length-mass relationships at the genus level in the published literature (e.g., Smock, 1980; Burgherr & Meyer, 1997; Oliphant & Hyslop, 2020; Dekanová, Venarsky & Bunn, 2022). Moreover, a study by Giustini et al. (2008) showed small differences between estimated and measured biomass at the genus level in the genera *Leuctra* (Plecoptera) and *Baetis* (Ephemeroptera), suggesting that species share similar biomass-size growth patterns within a given genus.

We employed linear mixed-effects models (LMMs; Pinheiro & Bates, 2006) to compare the length-mass relationships. Each model included the fixed effects of body length and country of origin, as well as their interaction, to test for potential differences between Portugal and Sweden. Simpler length-mass models without specifying country of origin were used for two of the surveyed taxa, that were only found in either Sweden (*Asellus*) or Portugal (*Naucoris*). To account for the non-independence of data from individuals collected in the same pond, pond identity was treated as a random effect in the LMMs. The Akaike Information Criterion (AIC) was used to specify the random effect structure. Both random intercept and random slope models were fitted for each taxon and the one with the lower AIC value was further evaluated. We screened all models for homoscedasticity, linearity and normality using diagnostic plots of the residuals and no considerable violations of the model assumptions were detected (See Fig. S1 and Fig. S2). The statistical significance of the fixed effects was assessed using F tests with Satterthwaite's approximation of degrees of freedom to account for correlations among repeated measurements taken from the same ponds (Kuznetsova, Brockhoff & Christensen, 2017). We calculated marginal pseudo-determination coefficients (R^2_m ; Nakagawa, Johnson & Schielzeth, 2017) as goodness-of-fit measures. All analyses and visualisations were performed in R version 4.2.2 (R Development Core Team, 2021) using the libraries DHARMa (Hartig, 2022), ggplot2 (Wickham, 2016), lme4 (Bates et al., 2014), lmerTest (Kuznetsova, Brockhoff & Christensen, 2017) and performance (Lüdtke et al., 2021).

Comparison of the length-mass relationships developed for Portugal and Sweden

To compare the allometric slopes (b) of the length-mass relationships developed in this study with those published in the literature for Portugal and Sweden, we extracted the

following information from each article: the taxonomic level, fitting method (linear or non-linear regression), size-mass equation (a and b constants, determination coefficient, sample size, body size range), morphometric trait measured (e.g., body length, head width), type of mass measured (wet-mass, dry-mass, ash-free dry mass), type of habitat, and sample preservation method. To allow for comparison, the published equations were transformed into a log-linear equation with a power model ($\ln DM = \ln a + b \times \ln BL$) and compared visually by plotting body length (mm) versus dry mass (mg) data.

Results

Literature review

For Portugal, we found 18 studies with published size-mass equations, developed for the classes Gastropoda and Bivalvia (e.g., Lillebø, Pardal & Marques, 1999; Gaspar, Santos & Vasconcelos, 2001; Vasconcelos et al., 2018), and the orders Amphipoda (e.g., Cunha, Moreira & Sorbe, 2000; Pardal et al., 2000; Marques et al., 2003) and Trichoptera (e.g., Canhoto, 1994; González & Graça, 2003; Azevedo-Pereira, Graça & González, 2006). Two studies developed but did not publish the length-mass equations (Sprung, 1994; Franca et al., 2009), while six studies used published equations, mostly to assess spatial and temporal variation in invertebrate biomass (e.g., Maranhão et al., 2001; Ferreira et al., 2016). For Sweden, only three studies published the size-mass equations, developed for the classes Gastropoda, Bivalvia, and Malacostraca – Rumohr, Brey & Ankar (1987) with 44 species, Perkins et al. (2010) with three species and Eklöf et al. (2017) with 14 species. A total of 17 studies developed, but did not publish, the length-mass equations (e.g., Hjelm et al., 2001; Persson & Brönmark, 2002; Svanbäck et al., 2008), while 20 studies used published equations, mostly to determine the contribution of macroinvertebrates to fish diets (e.g., Persson, 1997; Bystrom et al., 2004). For more information, see Table S2.

The database review of the composition of the families and genera surveyed showed some, but limited, taxonomical overlapping between the species lists of Portugal and Sweden, and a higher biodiversity at the species level in Portugal than in Sweden for most genera (see Table 3). The genus *Asellus* has only one species in both countries. The comparison of the genus *Caenis* was not possible since the data at the species level were not available for Portugal. Species diversity was only higher in Sweden than in Portugal for two genera, the genus *Cloeon* from the Ephemeroptera order and genus *Aeshna* from the Odonata. Among the taxa identified at the family level, the family Coenagrionidae has five genera occurring in Portugal and six genera in Sweden, of which four genera are shared between the two countries. For the family Dytiscidae, there are 26 genera confirmed in Portugal and 16 genera in Sweden, of which 11 genera are shared between the two countries.

Length-mass relationships

Overall, the models explained a high amount of variance in the mass data in all taxa (range of $R^2_m = 0.80 - 0.95$), except in the genus *Caenis* ($R^2_m = 0.63$; see Table 4). The statistical comparison of the equations obtained for each taxon in Portugal and Sweden revealed similar length-mass relationships for only one out of the eight taxa compared. The potential transferability of the length-mass relationships of the genus *Caenis* was high

between the two study areas, as the variable country had no significant effect on the curves obtained ($P = 0.172$; Table 4, Fig. 2). However, we found significantly different country-specific equations for the genera *Cloeon*, *Sympetrum* and *Notonecta*, and for the families Aeshnidae, Coenagrionidae, Corixidae and Dytiscidae ($P < 0.05$ in all cases; Table 4, Fig. 2), that indicate a low potential transferability of the equations obtained for these taxa between the two regions. We did not find general consistent trends for the country-specific effect. The slope of the length-mass equations obtained for the genera *Sympetrum* and *Notonecta* and for the families Aeshnidae and Corixidae was steeper for Portugal than for Sweden (Fig. 2). However, the slope of the length-mass equation obtained for the family Dytiscidae was steeper for Sweden than for Portugal (Fig. 2). Similarly, the slope of the length-mass equations obtained for the genus *Cloeon* and the family Coenagrionidae was steeper for Sweden, but in these cases the equations for the two countries crossed, respectively, at the body length of 8.6 mm and 16.2 mm (Fig. 2).

We were able to find published length-mass relationships in the literature, from either Portugal or Sweden, for a single taxon. In their study, Perkins et al. (2010) report a length-mass relationship for *Asellus aquaticus* using individuals collected in Umeå, Northern Sweden. The equation developed in our study closely matches the equation obtained by Perkins et al. (2010), especially in the smallest body size classes (Fig. 3). For larger body size classes, the equation published by Perkins et al. (2010) showed a steeper slope, being essentially parallel to the equation developed in this study and potentially transferrable upon application of a constant correction factor.

Discussion

Our literature overview highlights a lack of published length-mass relationships for the taxa assessed here. Our work greatly increased the number of length-mass relationships available for macroinvertebrate taxa from Southern and Northern Europe. We developed 18 new length-mass relationships for 10 genera and two families of pond macroinvertebrates from Portugal and Sweden. The equations obtained are the first length-mass relationships available from these two countries for 11 out of the 12 taxa assessed in this study, constituting important tools to estimate macroinvertebrate biomass and assess secondary production in pond habitats. We demonstrated that the equations obtained for each taxon are generally steeper in Portugal and, as such, are not transferrable between the two study areas in Southern and Northern Europe. In contrast, the comparison of the equation obtained for *A. aquaticus* in this study with another equation published for this taxon in Sweden showed a high transferability potential. We uncovered interesting trends in the literature overview of the studies conducted in Sweden, showing that despite not publishing the equations developed, authors in this country frequently borrowed equations from literature.

Literature review

The literature was scarce and patchy, indicating that the study of size-mass relationships in aquatic macroinvertebrates is still poorly developed, with equations available for only a restricted group of taxa and based on a multitude of size measurements across studies. Overall, we found a total of 40 studies developing length-mass relationships for the

two countries. Interestingly, the equations were published in 18 out of the 20 studies found for Portugal, but only in three out of the 20 studies found for Sweden. Notably, borrowing equations from the literature was more common for studies conducted in Sweden ($n = 21$) than in Portugal ($n = 6$). This disparity may be related to the general focus of the studies, as Portuguese studies focused on spatial and temporal variation in invertebrate biomass, while Swedish studies focused on the contribution of invertebrates to fish diets. Except for the study by Marques et al. (2003), we were unable to find any studies comparing the length-mass relationships developed with those published for other countries. These authors compared the size-frequency distribution, growth and biomass of populations of one Amphipod species between Portugal, Tunisia and Italy, but did not compare the size-mass relationships.

The low number of studies with published length-mass relationships limits our ability to easily and accurately obtain biomass estimates for aquatic macroinvertebrates, forcing authors to develop their own equations. As an alternative to this time-consuming task, authors often borrow published equations from the literature, often developed in different geographic and climate regions. However, this practice can lead to gross errors in the determination of biomass estimates, with important consequences for the study of secondary production in aquatic habitats. Our review underscores the need to expand the array of readily available length-mass relationships in the literature and advocates for the publishing of the equations developed as a standard practice.

Our research on the similarity in the composition of the families and genera surveyed showed a small overlap between the species of the families Dytiscidae and Coenagrionidae in Portugal and Sweden, as could be expected at the family level. This was especially true for Dytiscidae, which is an extraordinarily big and morphologically and ecologically diverse family. On the contrary, the genera *Cleon* and *Notonecta* showed a substantial overlap between the species occurring in the two countries, with all species of the genus *Cleon* in Portugal and all species of the genus *Notonecta* in Sweden being shared with the other country. Similarly, most of the genus *Sympetrum* species in Sweden are shared with Portugal. However, despite the large overlap in the species pools, the length-mass equations of *Cleon* and *Sympetrum* differed between the two countries. Analysing the species overlapping for the genus *Caenis*, the only taxon with transferable equations between countries, could inform on the contribution of interspecific variation to our results, but unfortunately there are no available data for the genus *Caenis* in Portugal. Nevertheless, despite potential issues with intra- and inter-specific variation, our results indicate that the transferability of length-mass relationships is difficult to predict, even when there is a large overlap in the species composing a genus in the two countries (e.g., *Cleon* and *Sympetrum*). This, suggests that other factors may determine the transferability of length-mass equations, such as local environmental conditions and climate. However, future studies at lower taxonomic levels of determination could provide clarity on the contribution of intra- and interspecific variation to the transferability of length-mass equations.

Transferable length-mass relationships

The transferability between the equations developed for each taxon in Southern and Northern Europe was low. The genus *Caenis* was the only taxon with transferable length-mass equations between the two countries. High transferability of length-mass relationships

in aquatic macroinvertebrates has been previously documented in Europe by Rosati, Barbone & Basset (2012), who showed invariance in the length-mass regressions obtained for macroinvertebrate taxa in the Danube delta and in Southern Italy. These authors argued that length-mass relationships are transferrable between ecoregions and can be used to estimate population biomass, provided that the environmental conditions are similar. Here, we showed that, although infrequently, length-mass relationships may be transferrable between ecoregions with different environmental conditions, suggesting that the potential transferability of length-mass relationships is taxon-dependent and difficult to predict. For instance, length-mass equations in the order Ephemeroptera were transferrable in the genus *Caenis*, but not in the genus *Cloeon*.

To our knowledge, only a single study reported a length-mass relationship for any of the macroinvertebrate taxa assessed here. Perkins et al. (2010) developed an equation for *Asellus aquaticus* (order Amphipoda) from Sweden using individuals collected in Umeå ($n = 50$), while we used individuals collected in Trelleborg ($n = 211$). Despite the lack of overlap between the published equation and the 95% confidence interval of the equation developed in this study, the graphical comparison shows very similar length-mass relationships for the two populations of *A. aquaticus*, especially at small body sizes. The similar intercept and the parallel slope of the two curves suggest a high potential transferability between the two equations. The average mass at length is slightly higher in the equation developed by Perkins et al. (2010), which may reflect the differences in the climatic conditions at the collection sites in the two studies, separated by a large geographical distance (ca. 1000 Km). Umeå is located in Northern Sweden (63° N) and experiences colder temperatures for longer periods with shorter growing seasons than Trelleborg, which is located in Southern Sweden (55° N). The seemingly high transferability of the length-mass relationships in *A. aquaticus* may be rooted in the ecology of this species, which is known to inhabit a wide range of freshwater ecosystems, including streams, rivers, ponds and lakes, and typically has two complete generations per year (Needham, 1938; Lafuente et al., 2021). This broad ecological tolerance suggests that environmental conditions may not impose strong constraints to its life history, leading to a comparable allometry across sites. Furthermore, Rosati, Barbone & Basset (2012) showed the length-mass relationships of *A. asellus* to be similar across a large biogeographical scale within the same category of habitats. Hence, the stable conditions of lentic ecosystems may lead to body mass stability, reducing variation in the length-mass relationships of *A. asellus* and explaining the seemingly high transferability of the length-mass equations in this taxon.

Non-transferable length-mass relationships

The length-mass relationships obtained were not transferrable between the two countries for seven out of the eight macroinvertebrate taxa compared in this study. Namely, the families Aeshnidae, Coenagrionidae, Corixidae and Dytiscidae, and the genera *Cloeon*, *Sympetrum* and *Notonecta*. As shown in Fig. 1, the non-transferability of the length-mass equations obtained was caused either by a different intercept (family Coenagrionidae), a different slope (family Aeshnidae and genus *Notonecta*) or a combination of both (genera *Cloeon* and *Sympetrum*; families Corixidae and Dytiscidae). This was expected and may be driven by many of factors, operating at different levels and with varying importance, that can

alter length-mass relationships. While this study did not assess the effects of any specific driver, it illustrates well the potential variation in length-mass relationships within the same taxonomic group that may have been driven by different environmental conditions in Southern and Northern Europe, as a consequence of the large geographic distance and latitudinal cline between the two study areas.

Studies comparing length-mass relationships of freshwater macroinvertebrate taxa at the familial level have shown high variability in model predictions for different geographic locations (Johnston & Cunjak, 1999; Hajiesmaeili, Ayyoubzadeh & Abdoli, 2019). Furthermore, environmental conditions, such as water temperature (Schröder, 1987) and chemistry (Meyer, 1989; Basset, 1993; Burgherr & Meyer, 1997), as well as food availability (Gee, 1988; Basset & Glazier, 1995) and trophic interactions (Basset & Rossi, 1990; Hajiesmaeili, Ayyoubzadeh & Abdoli, 2019) can cause intra-specific variability within instar dry mass, sex, life-stage and growth rates, constituting important drivers of changes in length-mass relationships of freshwater macroinvertebrates (Benke et al., 1999; Giustini et al., 2008; Méthot et al., 2012; Hajiesmaeili, Ayyoubzadeh & Abdoli, 2019). Curiously, mass at length was more frequently higher in Portugal (families Aeshnidae and Corixidae, and genus *Sympetrum* and *Notonecta*), but this trend in the country-specific effect was not observed systematically across all taxa. Following the temperature-size rule (Atkinson, 1995), the higher temperatures in Portugal should lead to smaller adult or metamorphic body sizes, but higher temperatures also accelerate growth and developmental rates (Dallas & Ross-Gillespie, 2015). Thus, we hypothesize that at the same body size, individuals from Portugal may be at more advanced developmental stages, which would explain the higher mass at length observed for most of the taxa surveyed. This is supported by the change in the steepness of the slopes of the length-mass relationships, that typically increases with size, suggesting that the last stages of development are characterized by a sharper increase in mass than in size.

Despite the effects of the geographic cline in the growth and life cycles on the length-mass relationships of aquatic macroinvertebrates (Marques et al., 2003), it is often possible to apply specific correction factors to increase their transferability. For example, the smearing correction factor used by Mährlein et al. (2016) successfully removed the bias introduced by the log transformation of mass in the length-mass relationships developed for macroinvertebrates found in the littoral zone of different lakes, leading to a good transferability of the equations between geographical regions. Such correction factors might apply to the family Aeshnidae ($DM_{\text{Portugal}} = DM_{\text{Sweden}} \times \exp(0.881)$) and the genus *Notonecta* ($DM_{\text{Portugal}} = DM_{\text{Sweden}} \times \exp(0.302)$), where the estimated length-mass relationships were parallel. However, the length-by-country interactions in our models (Table 4) prevent the application of a constant correction factor to improve the transferability of the equations developed for the families Coenagrionidae, Libellulidae, Corixidae and Dytiscidae and the genus *Cloeon*.

Our findings underscore the recommendations of previous studies to avoid the use of size-mass relationships obtained in study areas that are not in close geographic proximity, particularly at the edges of species' distribution ranges (Gowing & Recher, 1985; Mährlein et al., 2016; González, Basaguren & Pozo, 2002). However, our results suggest that at least for some taxa the size range of the individuals used to obtain the equations may determine the

potential transferability of length-mass relationships. Our data shows variation with size in the error of the biomass estimates obtained through the application of the equations developed for Portugal and Sweden, which increased with size in the taxa for which length-mass equations had a similar intercept but a different slope (e.g., family Aeshnidae, and genera *Sympetrum* and *Notonecta*). This suggests that the potential error in biomass estimates obtained through the application of equations borrowed from the literature may be lower at smaller sizes, even if the equations are not transferrable across the whole size range.

Length-mass relationships are used to calculate secondary biomass and production and can be used for estimation of life history traits (Resh, 1979; Cressa, 1999; Walther et al. 2006, Martins, Proulx & Magnan, 2014). The use of inappropriate length-mass relationships can thus lead to biased estimations of energy flow in aquatic or aquatic-terrestrial food webs, population dynamics and fitness, flux of emerging species and deposition to land, as a source of transport energy and nutrients from water to land. For example, Dekanová (2014) detected significant over- and underestimation of the biomass of three macroinvertebrate species when comparing self-developed and borrowed length-mass relationships from different geographical regions.

Methodological factors influencing the estimation of length-mass relationships

The development of length-mass equations is prone to methodological biases (Meyer, Peterson & Whiles, 2011). The field sampling, drying, measuring, and preservation methods, together with the gut contents of the individuals, the range of body lengths measured, and the sample size greatly determine the accuracy of length-mass relationships (Morinn & Nadon, 1991; Johnston & Cunjak, 1999; Dekanová et al., 2023; Mocq, Dekanová & Boukal, 2024). In our study, these methodological biases are unlikely to be responsible for differences in the length-mass relationships obtained, since they were developed using the same methods of collection, sample treatment and mathematical modelling. Thus, the low transferability of the length-mass relationships obtained at the family level, and to a lesser extent at the genus level, may stem from undesirable heterogeneity in the data (Cressa, 1999). It is generally recommended to determine length-mass relationships at lower taxonomic levels (see Poepperl, 1998; Miyasaka et al., 2008), and numerous studies show that the accuracy of biomass estimates obtained for aquatic insects increases with taxonomic specificity (e.g., Smock, 1980; Benke et al., 1999; Sabo, Bastow & Power, 2002). The grouping of individuals from different taxa may, at least partially, explain the large difference and high variation in the model predictions leading to the non-transferability of most of the length-mass relationships determined here. This issue is best exemplified at the family level in Dytiscidae, for which the large confidence intervals of the equations result from the grouping of two (Portugal) and three genera (Sweden) with substantially different morphology and size ranges. In contrast, the greater similarity in morphology of the genera composing the families Coenagrionidae and Corixidae lead to smaller differences in the equations obtained, adding further support to this argument.

Conclusions

Our work greatly expanded the number of length-mass relationships available in the literature for common pond macroinvertebrates from Southern and Northern Europe. The non-transferability of the equations obtained for comparable taxa in Portugal and Sweden suggests that the environmental conditions in the two geographic regions may affect the length-mass relationships of pond macroinvertebrates. However, even though the slope of the length-mass equations was generally steeper for Portugal, that was not always the case. The difficulty in identifying clear patterns of variation highlights the need for further quantitative studies across different biogeographic regions that assess the effects of environmental drivers on size-mass relationships. Our study provides evidence that length-mass relationships can change drastically between different geographic and climatic regions, but it is based on a restrict number of ponds within a small distance that were sampled once during the growing season. Studies covering broader geographical areas and longer timeframes are needed to include intra-specific variation and develop length-mass equations over wider size ranges and draw stronger conclusions.

Our research stresses the issues with borrowing published length-mass equations from the literature, but we provide guidelines to minimize the biases potentially introduced by this practice. When the use of self-developed length-mass relationships is impossible or impractical, borrowing published equations should be done at the lowest taxonomic level and for individuals within the size range used in their development. Furthermore, equations should be taken preferably from the same geographic region or in regions with similar environmental conditions. In addition to this, we believe necessary to make a concerted effort to adopt standard methodologies, as those described in the Sample processing section of this study, to facilitate the comparison of equations between studies. Following this, we stress the importance of publishing the equations developed as a standard practice, as it expands the array of available length-mass relationships in the literature, raising their value as tools to assess secondary production in other studies. This alone could have a significant impact on research by saving time and resources in the development of already known but unpublished equations. Finally, we believe that increased collaborative research at an international level could boost the availability of length-mass equations for general use, for example through the creation of a repository.

Acknowledgements

We thank the owners of the ponds for their kind approval of the study and for facilitating access. We thank Rui Rebelo and Diane Srivastava for their help in the field work and specimen collection.

References

- Atkinson D. 1995. Effects of temperature on the size of aquatic ectotherms: exceptions to the general rule. *Journal of Thermal Biology* 20:61-74 DOI: 10.1016/0306-4565(94)00028-H.
- Azevedo-Pereira HVS, Graça MAS, González JM. 2006. Life history of *Lepidostoma hirtum* in an Iberian stream and its role in organic matter processing. *Hydrobiologia* 559:183-192 DOI: 10.1007/s10750-005-1267-1.
- Basset A. 1993. Resource-mediated effects of stream pollution on food absorption of *Asellus aquaticus* (L.) populations. *Oecologia* 93:315-321 DOI: 10.1007/BF00317872.
- Basset A, Glazier DS. 1995. Resource limitation and intraspecific patterns of weight \times length variation among spring detritivores. *Hydrobiologia* 316:127-137 DOI: 10.1007/BF00016894.
- Basset A, Rossi L. 1990. Competitive trophic niche modifications in three populations of detritivores. *Functional Ecology* 1:685-694 DOI: 10.2307/2389737.
- Bates D, Mächler M, Bolker B, Walker S. 2014. Fitting linear mixed-effects models using lme4. arXiv:1406.5823 DOI: 10.48550/arXiv.1406.5823.
- Bauernfeind E, Soldan T. 2013. The Mayflies of Europe (Ephemeroptera). Ollerup: Apollo Books.
- Benke AC, Huryn AD. 2007. Secondary production of macroinvertebrates. In: Hauer FR, Lamberti GA, eds. *Methods in Stream Ecology* 2nd ed. Burlington: Academic Press/Elsevier, 691-710.
- Benke AC. 1993. Concepts and patterns of invertebrate production in running waters. *Internationale Vereinigung für theoretische und angewandte Limnologie: Verhandlungen* 25:15-38 DOI: 10.1080/03680770.1992.11900056.
- Benke AC, Huryn AD, Smock LA, Wallace JB. 1999. Length-mass relationships for freshwater macroinvertebrates in North America with particular reference to the southeastern United States. *Journal of the North American Benthological Society* 18:308-343 DOI: 10.2307/1468447.
- Biodiversity4all. Available at <http://biodiversity4all.org> (accessed October 2024).
- Bonacina L, Fasano F, Mezzanotte V, Fornaroli R. 2023. Effects of water temperature on freshwater macroinvertebrates: A systematic review. *Biological Reviews* 98:191-221 DOI: 10.1111/brv.12903.
- Brittain JE. 1983. The influence of temperature on nymphal growth rates in mountain stoneflies (Plecoptera). *Ecology* 64:440-446 DOI: 10.2307/1939962.
- Burgherr P, Meyer EI. 1997. Regression analysis of linear body dimensions vs. dry mass in stream macroinvertebrates. *Archiv für Hydrobiologie* 139:101-112.

- 588 Byström P, Andersson J, Persson L, De Roos AM. 2004. Size-dependent resource limitation
589 and foraging-predation risk trade-offs: growth and habitat use in young arctic
590 char. *Oikos* 104:109-121 DOI: 10.1111/j.0030-1299.2004.12759.x.
- 591 Canhoto CMMML. 1994. A decomposição e utilização das folhas de Eucalyptus globulus
592 como fonte alimentar por detritívoros aquáticos. Master thesis, University of Coimbra,
593 Portugal.
- 594 Cressa C. 1999. Dry mass estimates of some tropical aquatic insects. *Revista de biología*
595 *tropical* 47:133-141.
- 596 Cunha MR, Moreira MH, Sorbe JC. 2000. The amphipod *Corophium multisetosum*
597 (*Corophiidae*) in Ria de Aveiro (NW Portugal). II. Abundance, biomass and
598 production. *Marine Biology* 137:651-660 DOI: 10.1007/s002270000385.
- 599 Dallas HF, Ross-Gillespie V. 2015. Sublethal effects of temperature on freshwater organisms,
600 with special reference to aquatic insects. *Water Sa* 41:712-726 DOI: 10.4314/wsa.v41i5.15.
- 601 De Knijf G, Billqvist M, van Grunsven RHA, Prunier F, Vinko D, Trottet A, Bellotto V, Clay
602 J, Allen DJ. 2024. *Measuring the pulse of European biodiversity. European Red List of*
603 *Dragonflies & Damselflies (Odonata)*. Brussels: European Commission DOI:
604 10.2779/462053.
- 605 Dekanová V. 2014. Dĺžkovo-hmotnostné vzťahy vodného hmyzu a ich význam pre
606 stanovenie biomasy. Bc. Thesis, Technická univerzita vo Zvolene.
- 607 Dekanová V, Streberová Z, Novikmec M, Svitok M. 2023. The effect of preservation on
608 biomass and length estimates and its variation within and between two mayfly
609 species. *Limnology* 24:181-191 DOI: 10.1007/s10201-023-00715-8.
- 610 Dekanová V, Venarsky MP, Bunn SE. 2022. Length-mass relationships of Australian aquatic
611 invertebrates. *Austral Ecology* 47:120-126 DOI: 10.1111/aec.13077.
- 612 Dolný A, Harabiš F, Bárta D. 2016. *Vážky (Insecta: Odonata) České republiky*. Praha:
613 Academia.
- 614 Eklöf J, Austin Å, Bergström U, Donadi S, Eriksson BD, Hansen J, Sundblad G. 2017. Size
615 matters: relationships between body size and body mass of common coastal, aquatic
616 invertebrates in the Baltic Sea. *PeerJ* 5:e2906 DOI: 10.7717/peerj.2906.
- 617 Fehlinger L, Misteli B, Morant D, Juvigny-Khenafou N, Cunillera-Montcusi D, Chaguaceda
618 F, ... Rimcheska B. 2023. The ecological role of permanent ponds in Europe: a review of
619 dietary linkages to terrestrial ecosystems via emerging insects. *Inland Waters* 13:30-46 DOI:
620 10.1080/20442041.2022.2111180.
- 621 Ferreira V, Castela J, Rosa P, Tonin AM, Boyero L, Graça MA. 2016. Aquatic hyphomycetes,
622 benthic macroinvertebrates and leaf litter decomposition in streams naturally differing in
623 riparian vegetation. *Aquatic ecology* 50:711-725 DOI: 10.1007/s10452-016-9588-x.

- 624 França S, Vinagre C, Pardal MA, Cabral HN. 2009. Spatial and temporal patterns of benthic
625 invertebrates in the Tagus estuary, Portugal: comparison between subtidal and an intertidal
626 mudflat. *Scientia Marina* 73:307-318 DOI: 10.3989/scimar.
- 627 Gaspar MB, Santos MN, Vasconcelos P. 2001. Weight-length relationships of 25 bivalve
628 species (Mollusca: Bivalvia) from the Algarve coast (southern Portugal). *Journal of the*
629 *Marine Biological Association of the United Kingdom* 81:805-807 DOI:
630 10.1017/S0025315401004623.
- 631 Gee JH. 1988. Population dynamics and morphometries of *Gammarus pulex* L.: evidence of
632 seasonal food limitation in a freshwater detritivore. *Freshwater Biology* 19:333-343 DOI:
633 10.1111/j.1365-2427.1988.tb00355.x.
- 634 Giustini M, Miccoli FP, De Luca G, Cicolani B. 2008. Length-weight relationships for some
635 plecoptera and ephemeroptera from a carbonate stream in central Apennine
636 (Italy). *Hydrobiologia* 605:183-191. DOI: 10.1007/s10750-008-9353-9.
- 637 González JM, Graça MAS. 2003. Conversion of leaf litter to secondary production by a
638 shredding caddis-fly. *Freshwater Biology* 48:1578-1592. DOI: 10.1046/j.1365-
639 2427.2003.01110.x.
- 640 González JM, Basaguren A, Pozo J. 2002. Size-mass relationships of stream invertebrates in a
641 northern Spain stream. *Hydrobiologia* 489:131-137 DOI: 10.1023/A:102322050192.
- 642 Gowing G, Recher HF. 1985. Short note Further comments on length-weight relationships of
643 invertebrates. *Australian Journal of Ecology* 10:195.
- 644 Habdija I, Lajtner J, Belinić I. 1995. The contribution of gastropod biomass in macrobenthic
645 communities of a karstic river. *Internationale Revue der gesamten Hydrobiologie und*
646 *Hydrographie* 80:103-110 DOI: 10.1002/iroh.19950800113.
- 647 Hajiesmaeili M, Ayyoubzadeh SA, Abdoli A. 2019. Length-Weight Relationships for the
648 Benthic Invertebrates of a Mountain River in the Southern Caspian Sea Basin, Iran. *Journal of*
649 *Agricultural Science and Technology*, 21:1831-1841.
- 650 Hartig F. 2022. DHARMA: residual diagnostics for hierarchical (multi-level/mixed) regression
651 models. R Package version 0.4.6.
- 652 Hauer FR, Resh VH. 2017. Macroinvertebrates. In: Hauer FR, Lamberti GA, eds. *Methods in*
653 *Stream Ecology* Volume 1. Burlington: Academic Press, 297-319.
- 654 Hjelm J, Svanbäck R, Byström P, Persson L, Wahlström E. 2001. Diet-dependent body
655 morphology and ontogenetic reaction norms in Eurasian perch. *Oikos* 95:311-323 DOI:
656 10.1034/j.1600-0706.2001.950213.x.
- 657 Huryn AD, Wallace JB. 2000. Life history and production of stream insects. *Annual review of*
658 *entomology*, 45:83-110 DOI: 10.1146/annurev.ento.45.1.83.
- 659 Jansson A. 1969. *Identification of larval Corixidae (Heteroptera) of northern Europe.*
660 *Annales Zoologici Fennici* 6:289-312.

- 661 Johnston TA, Cunjak RA. 1999. Dry mass-length relationships for benthic insects: a review
662 with new data from Catamaran Brook, New Brunswick, Canada. *Freshwater Biology* 41:653-
663 674 DOI: 10.1046/j.1365-2427.1999.00400.x.
- 664 Kriska G. 2022. *Freshwater invertebrates in Central Europe: a field guide*. Cham: Springer
665 Nature.
- 666 Kuznetsova A, Brockhoff PB, Christensen RHB. 2017. lmerTest package: tests in linear
667 mixed effects models. *Journal of statistical software* 82:1-26 DOI: 10.18637/jss.v082.i13.
- 668 Lafuente E, Lürig MD, Rövekamp M, Matthews B, Buser C, Vorburger C, Räsänen K. 2021.
669 Building on 150 years of knowledge: the freshwater isopod *Asellus aquaticus* as an
670 integrative eco-evolutionary model system. *Frontiers in Ecology and Evolution* 9:748212
671 DOI: 10.3389/fevo.2021.748212.
- 672 Lillebø AI, Pardal MÂ, Marques JC. 1999. Population structure, dynamics and production of
673 *Hydrobia ulvae* (Pennant) (Mollusca: Prosobranchia) along an eutrophication gradient in the
674 Mondego estuary (Portugal). *Acta Oecologica* 20:289-304 DOI: 10.1016/S1146-
675 609X(99)00137-X.
- 676 Lüdecke D, Ben-Shachar MS, Patil I, Waggoner P, Makowski D. 2021. performance: An R
677 package for assessment, comparison and testing of statistical models. *Journal of Open Source*
678 *Software* 6:3139 DOI: 10.21105/joss.03139.
- 679 Mährlein M, Pätzig M, Brauns M, Dolman AM. 2016. Length-mass relationships for lake
680 macroinvertebrates corrected for back-transformation and preservation
681 effects. *Hydrobiologia*, 768:37-50 DOI: 10.1007/s10750-015-2526-4.
- 682 Maranhão P, Bengala N, Pardal M, Marques JC. 2001. The influence of environmental factors
683 on the population dynamics, reproductive biology and productivity of *Echinogammarus*
684 *marinus* Leach (Amphipoda, Gammaridae) in the Mondego estuary (Portugal). *Acta*
685 *Oecologica* 22:139-152 DOI:10.1016/S1146-609X(01)01112-2.
- 686 Marques JC, Gonçalves SC, Pardal MA, Chelazzi L, Colombini I, Fallaci M, Bouslama MF,
687 El Gtari M, Charfi-Cheikhrouha F, Scapini F. 2003. Comparison of *Talitrus saltator*
688 (Amphipoda, Talitridae) biology, dynamics, and secondary production in Atlantic (Portugal)
689 and Mediterranean (Italy and Tunisia) populations. *Estuarine. Coastal and Shelf Science*
690 58:127-148 DOI: 10.1016/S0272-7714(03)00042-8.
- 691 Martin CA, Proulx R, Magnan P. 2014. The biogeography of insects' length-dry mass
692 relationships. *Insect Conservation and Diversity* 7:413-419 DOI: 10.1111/icad.12063.
- 693 Méthot G, Hudon C, Gagnon P, Pinel-Alloul B, Armellin A, Poirier AMT. 2012.
694 Macroinvertebrate size-mass relationships: how specific should they be? *Freshwater*
695 *Science* 31:750-764 DOI: 10.1899/11-120.1.
- 696 Meyer CK, Peterson SD, Whiles MR. 2011. Quantitative assessment of yield, precision, and
697 cost-effectiveness of three wetland invertebrate sampling techniques. *Wetlands* 31:101-112
698 DOI: 10.1007/s13157-010-0122-y.

- 699 Meyer E. 1989. The relationship between body length parameters and dry mass in running
700 water invertebrates. *Archiv für Hydrobiologie* 117:191-203 DOI: 10.5555/19900501614.
- 701 Miyasaka H, Genkai-Kato M, Miyake Y, Kishi D, Katano I, Doi H, Ohba S, Kuhara N. 2008.
702 Relationships between length and weight of freshwater macroinvertebrates in
703 Japan. *Limnology* 9:75-80 DOI: 10.1007/s10201-008-0238-4.
- 704 Mocq J, Dekanová V, Boukal DS. 2024. Length–mass allometries of the larvae of aquatic
705 dipterans: differences between taxa, morphological traits, and methods. *Journal of Insect*
706 *Science* 24:10 DOI: 10.1093/jisesa/ieae012.
- 707 Morin A, Nadon D. 1991. Size distribution of epilithic lotic invertebrates and implications for
708 community metabolism. *Journal of the North American Benthological Society* 10:300-308
709 DOI: 10.2307/1467603.
- 710 Nakagawa S, Johnson PC, Schielzeth H. 2017. The coefficient of determination R^2 and intra-
711 class correlation coefficient from generalized linear mixed-effects models revisited and
712 expanded. *Journal of the Royal Society Interface* 14:20170213 DOI: 10.1098/rsif.2017.0213.
- 713 Naturdata. Available at <http://naturdata.com> (accessed October 2024).
- 714 Needham A E. 1938. The Crustacea: Some adaptations. *The Irish Naturalists' Journal* 7:74-
715 84.
- 716 Oliphant ZH, Hyslop EJ. 2020. Biomass, productivity, and biomass turnover (P/B) ratios of
717 benthic macroinvertebrates in high elevation ponds in St. Ann, Jamaica (West Indies).
718 *Caribbean Journal of Science* 50:275-300 DOI: 10.18475/cjos.v50i2.a11.
- 719 Pardal MA, Marques JC, Metelo I, Lillebø AI, Flindt MR. 2000. Impact of eutrophication on
720 the life cycle, population dynamics and production of *Ampithoe valida* (Amphipoda) along an
721 estuarine spatial gradient (Mondego estuary, Portugal). *Marine Ecology Progress*
722 *Series* 196:207-219 DOI: 10.3354/meps196207.
- 723 Perkins DM, McKie BG, Malmqvist B, Gilmour SG, Reiss J, Woodward G. 2010.
724 Environmental warming and biodiversity-ecosystem functioning in freshwater microcosms:
725 partitioning the effects of species identity, richness and metabolism. *Advances in ecological*
726 *research* 43:177-209 DOI: 10.1016/B978-0-12-385005-8.00005-8.
- 727 Persson A. 1997. Phosphorus release by fish in relation to external and internal load in a
728 eutrophic lake. *Limnology and Oceanography* 42:577-583 DOI: 10.4319/lo.1997.42.3.0577.
- 729 Persson A, Brönmark C. 2002. Foraging capacities and effects of competitive release on
730 ontogenetic diet shift in bream, *Abramis brama*. *Oikos* 97:271-281 DOI: 10.1034/j.1600-
731 0706.2002.970213.x.
- 732 Pinheiro J, Bates D. 2006. *Mixed-effects models in S and S-PLUS*. New York: Springer
733 science & business media.

- 734 Poepperl R. 1998. Biomass determination of aquatic invertebrates in the Northern German
735 lowland using the relationship between body length and dry mass. *Faunistisch-Ökologische*
736 *Mitteilungen* 7:379-386.
- 737 R Core Team. 2021. R: A language and environment for statistical computing. R Foundation
738 for Statistical Computing, Vienna, Austria
- 739 Resh VH. 1979. Sampling variability and life history features: basic considerations in the
740 design of aquatic insect studies. *Journal of the Fisheries Board of Canada*, 36:290-311 DOI:
741 10.1139/f79-047
- 742 Rigler FH, Downing JA. 1984. The calculation of secondary productivity. In: Rigler FH,
743 Downing JA, eds. *A manual on methods for the assessment of secondary productivity in fresh*
744 *waters*. Oxford: Blackwell Scientific Publications, 19-24.
- 745 Rosati I, Barbone E, Basset A. 2012. Length-mass relationships for transitional water benthic
746 macroinvertebrates in Mediterranean and Black Sea ecosystems. *Estuarine, Coastal and Shelf*
747 *Science* 113:231-239 DOI: 10.1016/j.ecss.2012.08.008.
- 748 Rozkošný R. 1980. *Klíč vodných larev hmyzu*. Praha: Československa Akademia Věd.
- 749 Rumohr H, Brey T, Ankar S. 1987. *A compilation of biometric conversion factors for benthos*
750 *invertebrates of the Baltic Sea*. Institut für Meereskunde.
- 751 Sabo JL, Bastow JL, Power ME. 2002. Length-mass relationships for adult aquatic and
752 terrestrial invertebrates in a California watershed. *Journal of the North American*
753 *Benthological Society* 21:336-343 DOI: 10.2307/1468420.
- 754 Schröder P. 1987. Biomasseparameter der Larvenstadien mitteleuropäischer
755 Kriebelmückenarten (Diptera: Simuliidae). *Archiv für Hydrobiologie. Supplementband.*
756 *Monographische Beiträge* 77:97-115.
- 757 Schuh RT, Slater JA. 1995. *True Bugs of the World (Hemiptera: Heteroptera): Classification*
758 *and Natural History*. New York: Cornell University Press.
- 759 Smock LA. 1980. Relationships between body size and biomass of aquatic
760 insects. *Freshwater biology* 10:375-383 DOI: 10.1111/j.1365-2427.1980.tb01211.x.
- 761 Sprung M. 1994. Macrobenthic secondary production in the intertidal zone of the Ria
762 Formosa—a lagoon in southern Portugal. *Estuarine, Coastal and Shelf Science* 38:539-558
763 DOI: 10.1006/ecss.1994.1037.
- 764 Svanbäck R, Eklöv P, Fransson R, Holmgren K. 2008. Intraspecific competition drives
765 multiple species resource polymorphism in fish communities. *Oikos* 117:114-124 DOI:
766 10.1111/j.2007.0030-1299.16267.x.
- 767 Tachet H, Richoux P, Bournaud M, Usseglio-Polatera P. 2010. *Invertébrés d'eau douce:*
768 *systématique, biologie, écologie*. Paris: CNRS éditions.
- 769 Vasconcelos P, Moura P, Pereira F, Pereira AM, Gaspar MB. 2018. Morphometric
770 relationships and relative growth of 20 uncommon bivalve species from the Algarve coast

- 771 (southern Portugal). *Journal of the Marine Biological Association of the United*
772 *Kingdom* 98:463-474 DOI: 10.1017/S002531541600165X.
- 773 Verovnik R, Sket B, Trontelj P. 2005. The colonization of Europe by the freshwater
774 crustacean *Asellus aquaticus* (Crustacea: Isopoda) proceeded from ancient refugia and was
775 directed by habitat connectivity. *Molecular ecology* 14:4355-4369 DOI: 10.1111/j.1365-
776 294X.2005.02745.x.
- 777 Wallace JB, Webster JR. 1996. The role of macroinvertebrates in stream ecosystem
778 function. *Annual review of entomology* 41:115-139 DOI:
779 10.1146/annurev.en.41.010196.000555.
- 780 Walther DA, Whiles MR, Flinn MB, Butler DW. 2006. Assemblage-level estimation of
781 nontanypodine chironomid growth and production in a southern Illinois stream. *Journal of the*
782 *North American Benthological Society* 25:444-452 DOI: 10.1899/0887-
783 3593(2006)25[444:AEONCG]2.0.CO;2.
- 784 WeatherSpark. Available at <http://weatherspark.com> (accessed 29 February 2024).
- 785 Wetzel RG, Likens GE. 2000. The heat budget of lakes. In: Wetzel RG, Likens GE, eds.
786 *Limnological Analyses*. New York: Springer, 45-56.
- 787 Wetzel MA, Leuchs H, Koop JH. 2005. Preservation effects on wet weight, dry weight, and
788 ash-free dry weight biomass estimates of four common estuarine macro-invertebrates: no
789 difference between ethanol and formalin. *Helgoland Marine Research* 59:206-213 DOI:
790 10.1007/s10152-005-0220-z.
- 791 Wickham H. 2016. Data Analysis. In: Wickham H, ed. *ggplot2*. Springer Cham, 189-201.
- 792 Zettel H, Nieser N, Polhemus DA. 1999. The Naucoridae (Insecta: Heteroptera) of the
793 Philippine Islands. *Annalen des Naturhistorischen Museums in Wien. Serie B für Botanik und*
794 *Zoologie* 43-105.

Table 1(on next page)

Pond characteristics.

Summary of the GPS coordinates and main environmental characteristics of the 13 ponds sampled in Portugal and Sweden (See Fig. 1).

1

Country	Pond	Latitude (°N)	Longitude (°E)	Altitude (m)	Surface area (m ²)	Water depth (m)	Water temperature (°C)	Conductivity (µS.cm ⁻¹)	Oxygen concentration (mg.L ⁻¹)	pH
Portugal	P1	38.138753	-8.566047	116	1,025	0.44	27.4	312	14.04	9.03
	P2	38.083453	-8.545456	219	434	0.54	25.7	347	6.04	7.35
	P3	38.073022	-8.487406	122	50	0.40	22.0	189	6.09	7.75
	P4	38.080325	-8.474219	137	3,420	0.49	20.8	180	2.84	6.96
	P5	38.078542	-8.461964	139	756	0.80	24.3	314	7.43	7.67
	P6	38.071647	-8.558103	223	320	0.46	25.7	612	16.08	9.97
	P7	38.081117	-8.597997	250	510	0.50	24.0	459	5.77	7.49
	P8	38.111817	-8.604150	253	350	0.55	19.1	187	7.30	7.75
Sweden	S1	55.444424	13.173338	23	2,000	0.80	20.5	606.33	3.91	7.58
	S2	55.471082	13.144300	44	8,400	0.13	17.9	731.67	1.55	6.95
	S3	55.478354	13.137272	37	240	0.86	18.7	460	2.88	6.80
	S4	55.450990	13.168690	36	1,650	0.40	22.3	417	9.14	7.87
	S5	55.471975	13.140226	23	1,200	0.70	22.2	NA	NA	8.07

2

Figure 1

Geographic location of the ponds surveyed in the two study areas in Southern (Grândola, Portugal; $n = 8$) and Northern Europe (Trelleborg, Sweden; $n = 5$).

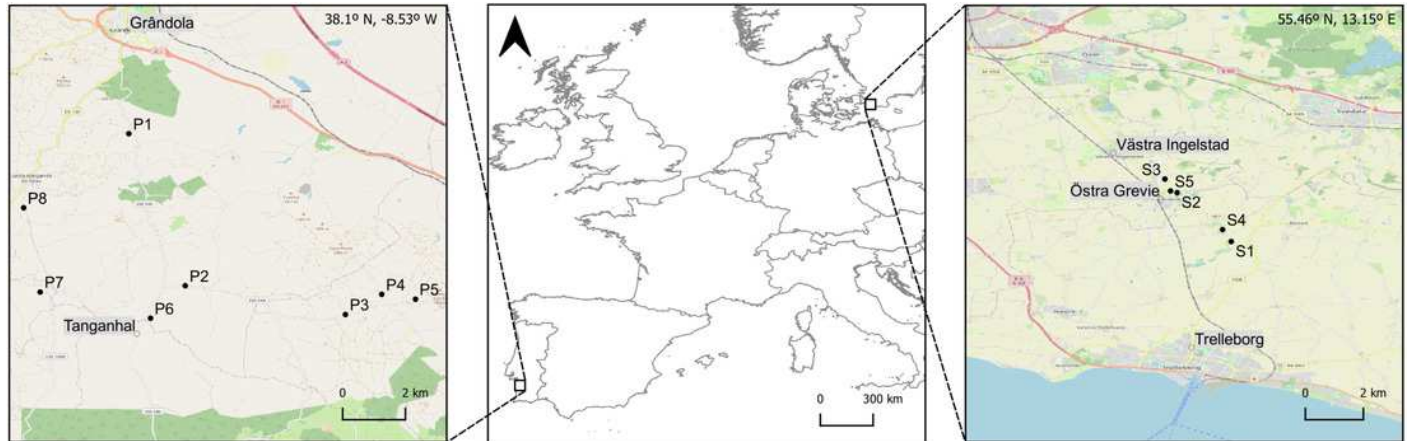


Table 2 (on next page)

Length-mass relationships developed for the pond macroinvertebrates collected in Portugal and Sweden.

We show the parameters of the power model ($\ln DM = \ln a + b \times \ln BL$) of the relationships between body length (BL [mm]) and dry mass (DM [mg]), where n = sample size, Range = size range of body length (mm), a and b = fitted regression constants and SE = standard error.

1

Order	Family	Genus	Country	<i>n</i>	Range (mm)	ln <i>a</i>	SE	<i>b</i>	SE
Isopoda	Asellidae	<i>Asellus</i>	Sweden	211	2.4 – 16	-5.2742	0.1100	2.9704	0.0465
Ephemeroptera	Baetidae	<i>Cloeon</i>	Portugal	135	2.9 – 9	-3.7406	0.1763	1.8299	0.0955
			Sweden	129	5.1 – 11.6	-7.5214	0.3526	3.5890	0.1651
	Caenidae	<i>Caenis</i>	Portugal	45	2.9 – 7	-4.1558	0.6761	2.0809	0.3946
			Sweden	114	2.3 – 8.8	-4.4305	0.6258	2.1238	0.3194
Odonata	Coenagrionidae		Portugal	300	2–3 – 21.9	-5.0348	0.3286	2.3374	0.1193
			Sweden	187	6.4 – 23.8	-7.2736	0.4309	3.1407	0.1569
	Aeshnidae	<i>Anax</i>	Portugal	55	5.2 – 33.5	-5.2473	0.4048	2.7703	0.1340
		<i>Aeshna</i>	Sweden	33	4.3 – 23.3	-5.5252	0.3922	2.5385	0.1652
	Libellulidae	<i>Sympetrum</i>	Portugal	97	5.6 – 19.2	-6.4656	0.3650	3.3861	0.1348
			Sweden	83	3.8 – 16.2	-3.8864	0.3647	2.1025	0.1555
Hemiptera	Corixidae	<i>Corixa</i>	Portugal	46	3 – 7.2	-2.9446	0.2910	1.9940	0.1796
		<i>Sigara</i>	Sweden	77	1.5 – 8.3	-4.3306	0.1353	2.5705	0.0882
	Notonectidae	<i>Notonecta</i>	Portugal	195	2.3 – 16.5	-3.8855	0.2476	2.7167	0.1228
			Sweden	58	2.4 – 17.5	-4.5538	0.3054	2.9085	0.1543
	Naucoridae	<i>Naucoris</i>	Portugal	66	1.2 – 10	-3.2901	0.2349	2.4167	0.1360
			Sweden	86	7.6 – 40	-4.0859	0.6517	1.8232	0.2980
Coleoptera	Dytiscidae		Portugal	81	2.7 – 44.3	-2.1355	0.3345	0.9988	0.1724
			Sweden	86	7.6 – 40	-4.0859	0.6517	1.8232	0.2980

2

Table 3(on next page)

Similarity in the composition of the families and genera surveyed.

Number of species for each taxon in Portugal and Sweden and number of shared species between the two countries. Species distribution data taken from online databases Naturdata (Portugal) and Biodiversity4all (Sweden).

Order	Family	Genus	No. of species (Portugal)	No. of species (Sweden)	No. of species (shared)
Isopoda	Asellidae	<i>Asellus</i>	1	1	1
Ephemeroptera	Baetidae	<i>Cloeon</i>	3	5	3
	Caenidae	<i>Caenis</i>	NA	6	NA
Odonata	Coenagrionidae		13	13	5
	Aeshnidae	<i>Anax</i>	4	2	2
		<i>Aeshna</i>	6	9	4
	Libellulidae	<i>Sympetrum</i>	8	7	6
	Hemiptera	Corixidae	<i>Corixa</i>	4	1
<i>Sigara</i>			9	5	2
Notonectidae		<i>Notonecta</i>	6	2	2
Naucoridae		<i>Naucoris</i>	1	0	0
Coleoptera		Dytiscidae		106	35

Table 4(on next page)

Summary of the LMMs testing for the effect of body length, country (Portugal vs. Sweden) and their interaction on the body mass of each pond macroinvertebrate taxon.

Test statistics are displayed with corrected degrees of freedom using Satterthwaite's method (F), along with associated probabilities (p) and marginal coefficients of determination (R^2). p-values significant at $\alpha = 0.05$ are shown in boldface.

1

Order	Family	Genus	Length		Country		Length × Country		
			F	p	F	p	F	p	R ²
Isopoda	Asellidae	<i>Asellus</i>	4086.00	<0.001	-	-	-	-	0.95
Ephemeroptera	Baetidae	<i>Cloeon</i>	807.24	<0.001	91.98	<0.001	85.07	<0.001	0.82
	Caenidae	<i>Caenis</i>	80.18	<0.001	1.99	0.172	0.010	0.934	0.63
Odonata	Coenagrionidae		772.62	<0.001	17.07	0.002	16.62	0.002	0.88
	Aeshnidae		661.16	<0.001	66.22	<0.001	1.19	0.279	0.95
	Libellulidae	<i>Sympetrum</i>	711.47	<0.001	24.99	<0.001	38.91	<0.001	0.91
Hemiptera	Corixidae		520.41	<0.001	18.66	<0.001	8.30	0.005	0.90
	Naucoridae	<i>Naucoris</i>	315.84	<0.001	-	-	-	-	0.80
	Notonectidae	<i>Notonecta</i>	824.53	<0.001	10.30	0.007	0.95	0.363	0.93
Coleoptera	Dytiscidae		67.17	<0.001	7.09	0.022	5.73	0.040	0.93

2

Figure 2

Comparison of the developed length-mass relationships between Portugal and Sweden.

Comparison of the length-mass relationships developed for the orders Ephemeroptera (A - *Cloeon* and B - *Caenis* genera), Odonata (C - genus *Sympetrum*, and families D - Coenagrionidae and E - Aeshnidae), Hemiptera (F - genus *Notonecta*, and G - family Corixidae) and Coleoptera (H - family Dytiscidae). Lines with colour bands = mean fit \pm 95 % confidence intervals for each taxon in Portugal (red) and Sweden (blue).

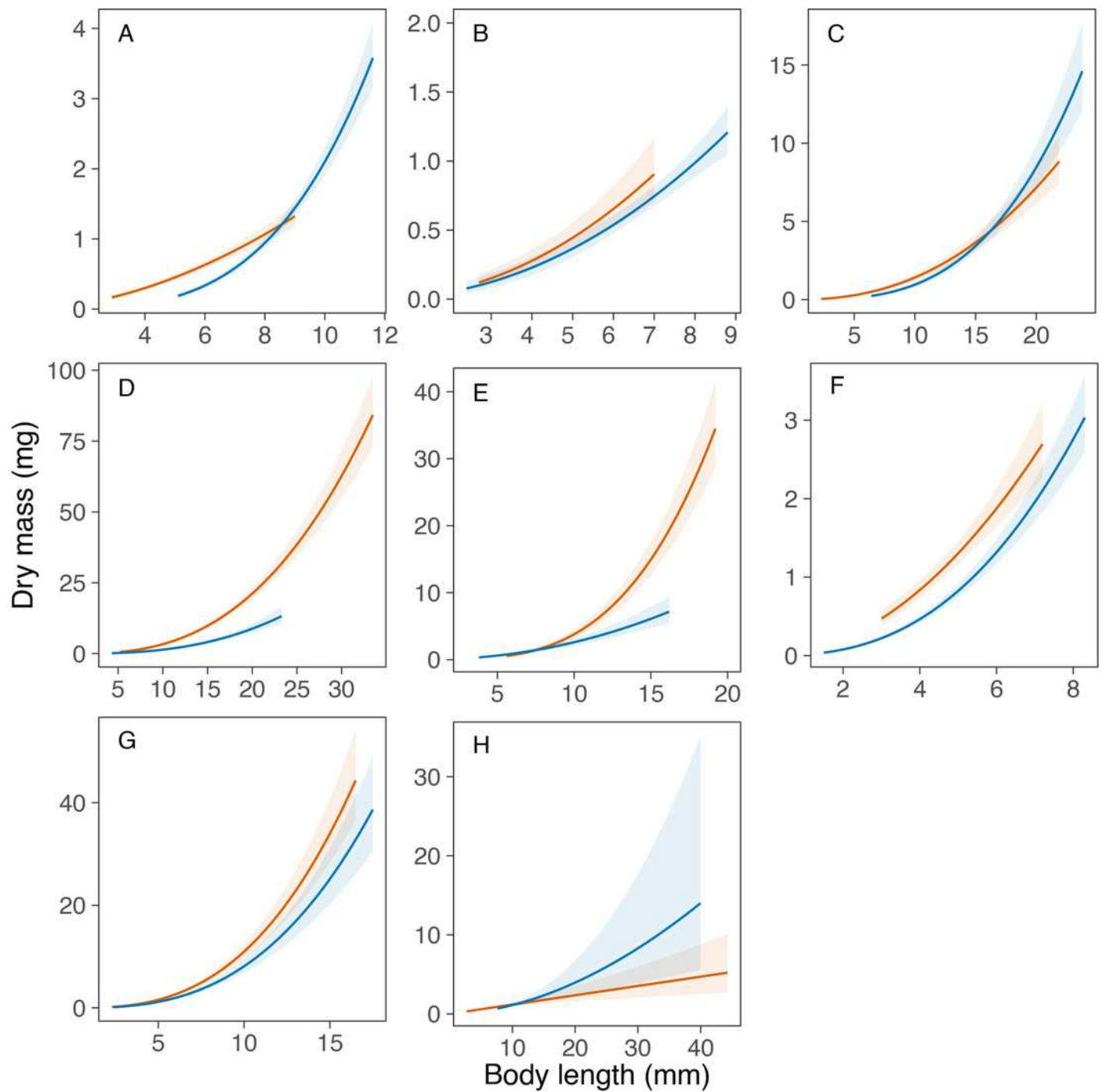


Figure 3

Comparison of the length-mass relationships for genus *Asellus*.

Comparison of the length-mass relationship developed for the genus *Asellus* (order Isopoda) in this study with individuals from Trelleborg in Southern Sweden (solid line \pm 95 % confidence interval), and in the study by Perkins et al. (2010) with individuals from Umeå in Northern Sweden (dashed line).

